



patented!

Optionally available with corrosion resp. spark resistant features.



Chain guide



The patented Yale brake system low noise and reduced wear.



High quality encapsulated ball bearings and sliding bushes for smooth and effortless operation.

Hand chain hoist model Yalelift 360

Capacity 500 - 20000 kg

Areas of operation as well as operator conditions have been improved in trail-blazing fashion, which goes far beyond the classical hand chain hoist.

Features

- The revolutionary 360° rotating hand chain guide allows the operator to work from virtually any position, in confined spaces or above the load. The Yalelift can even be operated from the side of the load which also makes it possible to use the hoist for horizontal pulling or tensioning. Due to the additional flexibility, the operator is no longer forced to work in the danger zone near the load.
- The new patented brake system is extremely quiet and guarantees operational safety and improved serviceability due to omission of the vulnerable ratchet pawls. All parts are made of high quality materials, additionally galvanised or yellow-chromated to increase corrosion prevention.
- The enclosed robust stamped steel housing protects all internal components even in the toughest conditions.
- Chain guide and gearbox are almost totally enclosed. Even under the toughest conditions the internal gearbox remains protected.
- The hardened load sheave with four precision machined pockets ensures accurate movement of the load chain.
- The extremely low headroom allows maximum use of the lifting height.
- The surface protected zinc-plated alloy steel load chains fulfil all requirements of current national and international standards and regulations.
- Drop forged load and suspension hooks that yield under overload instead of breaking, are made of high tensile steel and are standard for all Yale hoists. The hooks are fitted with robust safety latches and rotate 360°.

Option

- Spark resistant features.
- Overload prevention device
- Chain container
- Corrosion resistant version.

Hand chain hoist model Yalelift 360 20t

Capacity 20000 kg

The new brake system used in the Yalelift series is also employed in the Yalelift 360 20t, setting new standards in terms of operational safety and serviceability. The brake is extremely quiet and wear resistant. All components are made of high quality materials, some components are galvanized or yellow-chromated for added corrosion protection. This ensures that also heaviest loads are held reliably. In spite of its high capacity, the Yalelift 360 20t features a compact design.

The enclosed robust stamped steel body resists in the toughest conditions and allows outside operation.

The hardened load sheave with five precision machined pockets ensures accurate movement of the load chain.

The low headroom (hook-to-hook dimension 1010 mm) allows maximum use of the lifting height. The Yalelift 360 20t is equipped with six chain falls only which results in higher speed and lower weight.

Option

- Spark resistant features.
- Overload prevention device
- Chain container
- Corrosion resistant version.



The robust stamped steel housing with four stay bolts is resistant to the toughest working conditions.



The precisely machined load sheave ensures accurate movement of the load chain.



Yale hoists and trolleys are not designed for passenger elevation applications and must not be used for this purpose.

Hoisting Equipment Hand chain hoists

Technical data model Yalelift

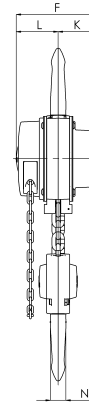
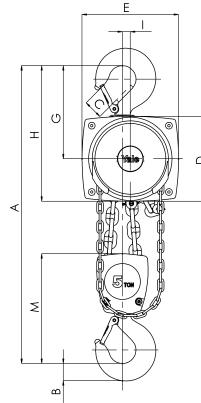
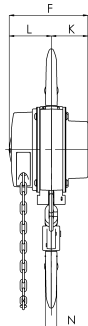
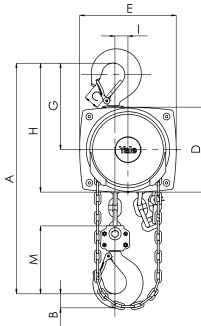
Model	EAN-No. 4025092*	Capacity kg	Number of chain falls	Chain dimensions d x p mm	Hand chain overhaul for 1 m lift m	Pull on hand chain at WLL daN	Weight at standard lift (3 m) kg
YL 500	*075183	500	1	5 x 15	30	21	9
YL 1000	*075190	1000	1	6 x 18	49	30	13
YL 2000	*075206	2000	1	8 x 24	71	32	20
YL 3000	*075213	3000	1	10 x 30	87	38	29
YL 5000	*075220	5000	2	10 x 30	174	34	38
YL 10000	*075237	10000	3	10 x 30	261	44	71
YL 20000	*080910	20000	6	10 x 30	522	2 x 44	196



Hoisting Equipment Hand chain hoists

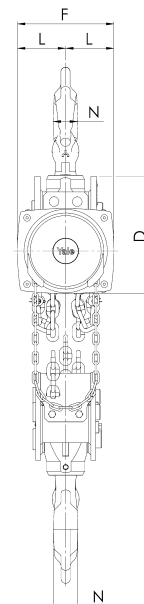
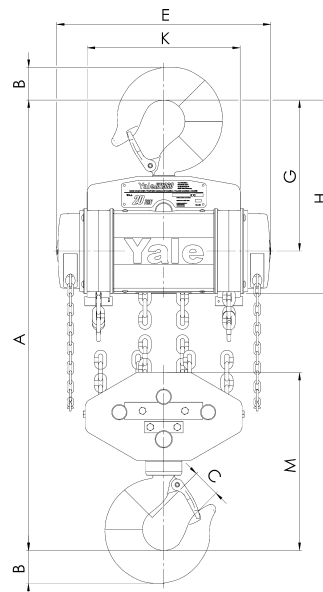
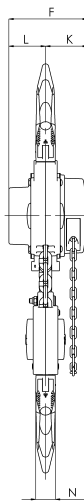
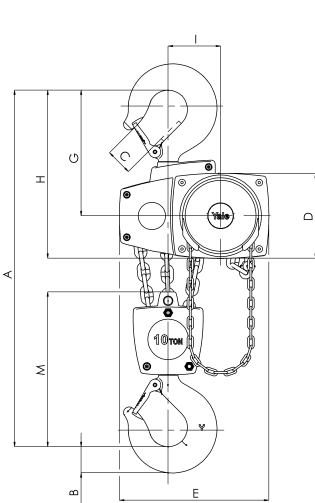
Dimensions model Yalelift

Model	YL 500	YL 1000	YL 2000	YL 3000	YL 5000	YL 10000	YL 20000
Amin., mm	300	335	395	520	654	825	1010
B, mm	17	22	30	38	45	68	85
C, mm	24	29	35	40	47	68	64
D, mm	133	156	182	220	220	220	303
E, mm	148	175	203	250	250	383	555
F, mm	139	157	183	204	204	204	250
G, mm	139	164	192	225	242	326	391
H, mm	206	242	283	335	352	436	501
I, mm	24	24	31	34	21	136	-
K, mm	61	70	83	95	95	95	396
L, mm	79	87	100	109	109	109	125
M, mm	110	125	156	178	285	401	471
N, mm	14	19	22	30	37	50	56



Model Yalelift 360, 500 - 3000 kg

Model Yalelift 360, 5000 kg



Model Yalelift 360, 10000 kg

Model Yalelift 360, 20000 kg



Hand chain hoist model Towerlift

Capacity 1000 - 2000 kg

The Towerlift is the inverted version of the Yalelift 360 and specifically designed for operation on traversing tower systems.

Features

- The unit is provided with a special chain guide and a totally enclosed housing.
- The basic version of the Towerlift offers capacities of 1000 kg and 2000 kg.
- Black powder coat finish as standard.

Option

- Overload prevention device.
- Chain container

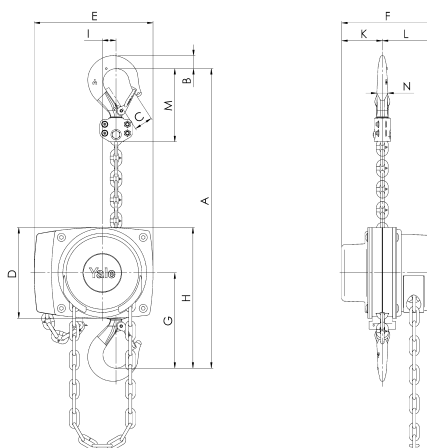
! Different colours, capacities and lifting heights are available upon request.

Technical data model Towerlift

Model	EAN-No. 4025092*	Capacity kg	Number of chain falls	Chain dimensions d x p mm	Hand chain overhaul for 1 m lift m	Pull on hand chain at WLL daN	Weight at standard lift (3 m) kg
Towerlift 1000	*079815	1000	1	6 x 18	49	30	14
Towerlift 2000	*079822	2000	1	8 x 24	71	32	21

Dimensions model Towerlift

Model	Towerlift 1000	Towerlift 2000
Amin., mm	335	395
B, mm	22	30
C, mm	29	35
D, mm	156	182
E, mm	205	243
F, mm	157	183
G, mm	164	192
H, mm	242	283
I, mm	24	31
K, mm	70	83
L, mm	87	100
M, mm	125	156
N, mm	19	22



Model Towerlift

Hand chain hoist model Towerlift ES

Capacity 1000 kg

The Towerlift ES is a further development of the Towerlift. Like the Towerlift the model ES is provided with a chain reeving system specifically designed for the stage/entertainment industry. This allows operation in standard hoist configuration as well as in inverted mode.

Features

- The hoist comes with revolving chain container which can be fully used in standard hoist configuration as well as in inverted mode.
- Black powder coat finish.
- The chain container has a maximum capacity for 15 m of chain.

Option

- Overload prevention device.



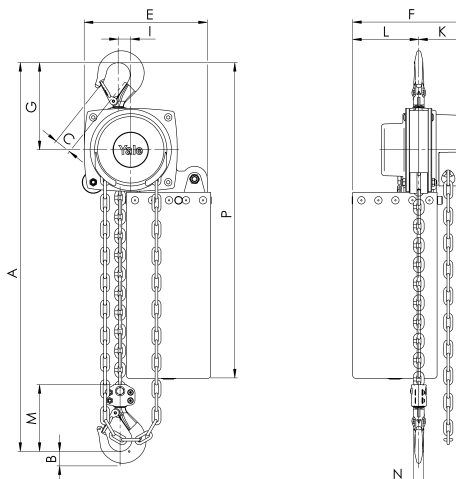
Yale hoists and trolleys are not designed for passenger elevation applications and must not be used for this purpose.

Technical data model Towerlift ES

Model	EAN-No. 4025092*	Capacity kg	Number of chain falls	Chain dimensions d x p mm	Hand chain overhaul for 1 m lift m	Pull on hand chain at WLL daN	Weight at standard lift (3 m) kg
Towerlift ES	*079495	1000	1	6 x 18	49	30	15

Dimensions model Towerlift ES

Model	Towerlift ES 1000
Amin., mm	335
B, mm	22
C, mm	29
D, mm	213
E, mm	232
F, mm	212
G, mm	164
H, mm	299
I, mm	24
K, mm	124
L, mm	88
M, mm	125
N, mm	19
O, mm	335
P, mm	593
S, mm	455



Model Towerlift ES



Depicted rubber buffers optionally available.

Optionally available with corrosion resp. spark resistant features.

Hand chain hoist with integrated push or geared type trolley model Yalelift IT

Capacity 500 - 10000 kg

The combination of the Yalelift 360 with a low headroom manual trolley provides even more flexibility in the application of the Yalelift 360.

Features

- All units of this series up to a capacity of 3000 kg are provided with single chain fall and the min. headroom (Dim. A) has been further reduced. Ideal for applications with low ceilings and limited headroom.
- The proven and almost stepless adjustment system allows quick and easy assembly of the trolley.
- Trolleys up to 5 t are offered for two beam ranges. Range A for a flange width up to 180 mm is standard and covers approx. 80 % of all requirements. Conversion to range B for beam width up to 300 mm can be easily accomplished.
- The trolley wheels are designed for a max. beam profile incline of 14 % (DIN 1025 - part 1), excellent rolling features are guaranteed by prelubricated, encapsulated ball bearings.
- Anti-tilt and anti-drop devices are standard.
- A subsequent conversion of a Yalelift 360 into a Yalelift IT with integrated trolley is easily possible at any time.

Option

- Spark resistant features.
- Overload prevention device
- Chain container
- Corrosion resistant version.
- Beam locking device to secure the unloaded trolley in a fixed position on the beam (park position e.g. on ships). Available up to a capacity of 5000 kg for a maximum of 3 m track height.

Technical data model Yalelift IT

Model	EAN-No. 4025092*	Capacity	Number of chain falls	Size	Beam flange width b	Beam flange thickness t	Min. radius curve	Net weight for 3 m lift - P	Net weight for 3 m lift - G	Net weight for 3 m lift with beam brake - P	Net weight for 3 m lift with beam brake - G
		kg			mm	mm	m	kg	kg	kg	kg
YLIT 500	*079006	500	1	A	50 - 180	19	0.9	20	24	26	31
YLIT 500	-	500	1	B	180 - 300	19	0.9	21	25	27	32
YLIT 1000	*079013	1000	1	A	50 - 180	19	0.9	27	32	35	40
YLIT 1000	-	1000	1	B	180 - 300	19	0.9	29	33	37	41
YLIT 2000	*079020	2000	1	A	58 - 180	19	1.15	44	49	52	57
YLIT 2000	-	2000	1	B	180 - 300	19	1.15	46	50	54	58
YLIT 3000	*079037	3000	1	A	74 - 180	27	1.5	77	82	86	91
YLIT 3000	-	3000	1	B	180 - 300	27	1.4	79	84	88	93
YLIT 5000	*079044	5000	2	A	98 - 180	27	2.0	125	130	135	140
YLIT 5000	-	5000	2	B	180 - 300	27	1.8	129	134	139	144
YLIT 10000	*080996	10000	3	B	125 - 310	40	1,8	-	-	-	-

P = with pushed trolley
G = with geared trolley



Chain guide



The patented Yale brake system low noise and reduced wear.



High quality encapsulated ball bearings and sliding bushes for smooth and effortless operation.



The robust stamped steel housing with four stay bolts is resistant to the toughest working conditions.



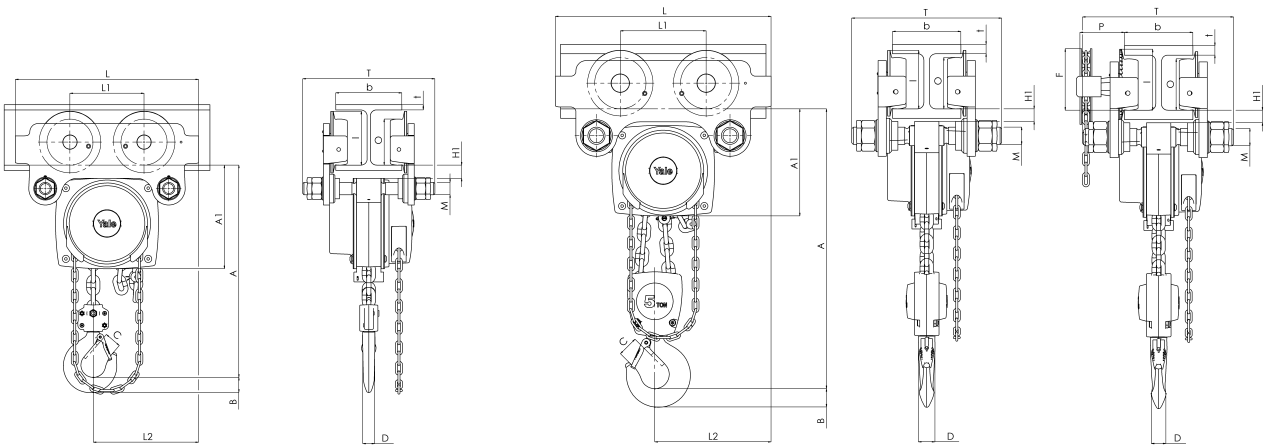
The precisely machined load sheave ensures accurate movement of the load chain.

Yale hoists and trolleys are not designed for passenger elevation applications and must not be used for this purpose.

Hoisting Equipment Hand chain hoists

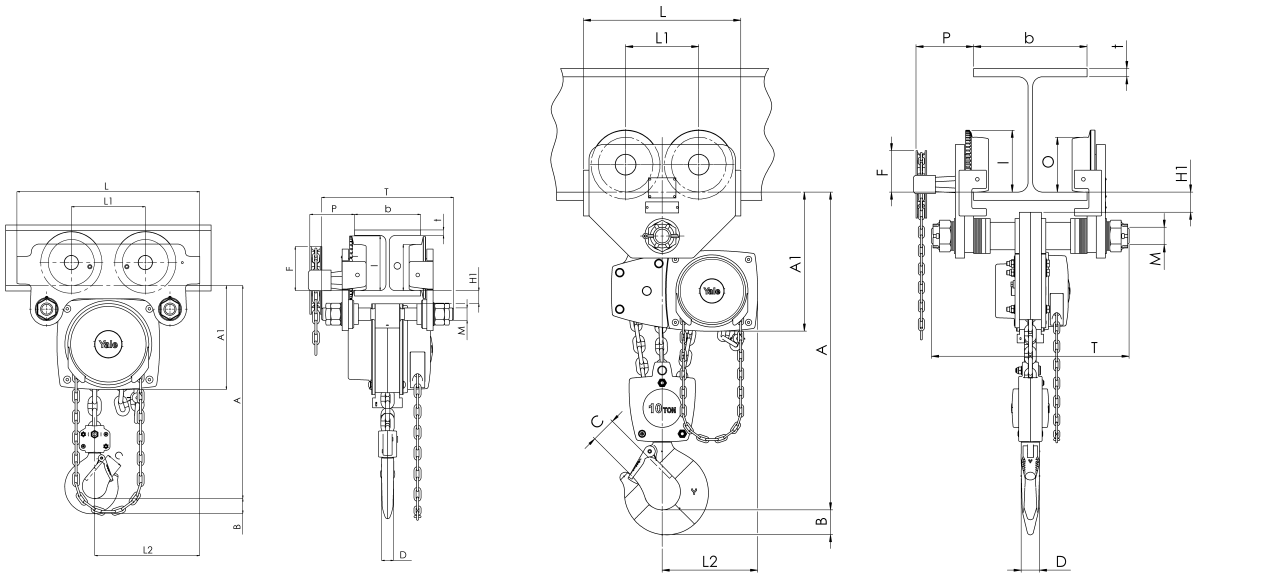
Dimensions model Yalelift IT

Model	YLIT 500	YLIT 1000	YLIT 2000	YLIT 3000	YLIT 5000	YLIT 10000
Amin., mm	245	272	323	382	550	784
A1, mm	158	178	205.5	252	260.5	380
A2, mm	-	-	-	-	-	-
B, mm	17	22	30	38	45	68
C, mm	24	29	35	40	47	68
D, mm	14	19	22	30	37	50
F (Geared), mm	92	92	91	107	149.5	113
H1, mm	24.5	24	23.5	32	30.5	55
I (Pushed), mm	71.5	71.5	95.5	131	142.5	169
I (Geared), mm	76.5	76.5	98	132.5	148.5	169
L, mm	270	310	360	445	525	430
L1, mm	130	130	150	180	209	200
L2, mm	159	175	207	256	283	261
L3, mm	-	-	-	-	-	-
L4, mm	-	-	-	-	-	-
M, mm	M 18	M 22	M 27	M 30	M 42	M 48
O, mm	60	60	80	112	125	150
P (Geared), mm	108	110	112	112	117	158
T (area A), mm	280	290	305	320	364	540
T (area B), mm	400	410	425	440	484	540



Model Yalelift ITP, 500 - 3000 kg

Model Yalelift ITP/ITG 5000 kg



Model Yalelift ITG, 500 - 3000 kg

Model Yalelift ITG, 10000 kg

Hand chain hoist with integrated push or geared type trolley (low headroom) model Yalelift LH

Capacity 500 - 10000 kg

The hand chain hoist model Yalelift LH with integrated low headroom manual trolley is the consequent further development of the Yalelift IT. Wherever an even smaller headroom is essential, the Yalelift LH is the ideal choice.

Features

- The specially developed chain reeving system and chain guide allow the bottom block to be pulled laterally to the hoist even further up and almost against the beam flange.
- The integrated design of the innovative Yalelift LH uses the same manual trolleys as incorporated in the Yalelift IT series.
- All models of the LH series up to 3000 kg capacity are provided with single chain fall.
- The proven and almost stepless adjustment system allows quick and easy assembly of the trolley.
- The trolleys are offered for two beam ranges. Range A for a flange width up to 180 mm is standard and covers approx. 80 % of all requirements. Conversion to range B for beam width up to 300 mm can be easily accomplished.
- The low headroom version of the Yalelift IT is adjustable to fit a wide range of beam profiles (e.g. INP, IPE, IPB).
- The trolley wheels are designed for a max. beam profile incline of 14 % (DIN 1025 - part 1), excellent rolling features are guaranteed by pre-lubricated, encapsulated ball bearings.
- Anti-tilt and anti-drop devices are standard.
- Excellent rolling features due to machined steel wheels mounted on pre-lubricated, encapsulated ball bearings.
- A subsequent conversion of a Yalelift 360 into a Yalelift LH with integrated trolley is also easily possible.

Option

- Overload prevention device
- Chain container
- Corrosion resistant version.
- Beam locking device to secure the unloaded trolley in a fixed position on the beam (park position e.g. on ships).



Depicted rubber buffers and chain container optionally available.

! Optionally available with corrosion resp. spark resistant features.

Hoisting Equipment Hand chain hoists

Technical data model Yalelift LH

Model	EAN-No. 4025092*	Capacity	Number of chain falls	Size	Beam flange width b	Beam flange thickness t	Min. radius curve	Net weight for 3 m lift - P	Net weight for 3 m lift - G	Net weight for 3 m lift with beam brake - P	Net weight for 3 m lift with beam brake - G
		kg			mm	mm	m	kg	kg	kg	kg
YLLH 500	*079501	500	1	A	60 - 180	19	0.9	27	31	33	38
YLLH 500	-	500	1	B	180 - 300	19	0.9	27	32	34	38
YLLH 1000	*079518	1000	1	A	70 - 180	19	0.9	35	40	43	48
YLLH 1000	-	1000	1	B	180 - 300	19	0.9	36	41	44	49
YLLH 2000	*079525	2000	1	A	82 - 180	19	1.15	61	65	69	73
YLLH 2000	-	2000	1	B	180 - 300	19	1.15	62	67	70	75
YLLH 3000	*079532	3000	1	A	100 - 180	19	1.5	107	112	116	121
YLLH 3000	-	3000	1	B	180 - 300	19	1.4	109	114	118	123
YLLH 5000	*079549	5000	2	A	110 - 180	27	2.0	152	157	162	167
YLLH 5000	-	5000	2	B	180 - 300	27	1.8	156	161	166	171
YLLH 10000	-	10000	3	A	125 - 180	40	1.8	on request	on request	on request	on request
YLLH 10000	-	10000	3	B	180 - 310	40	1.8	on request	on request	on request	on request

P = with pushed trolley

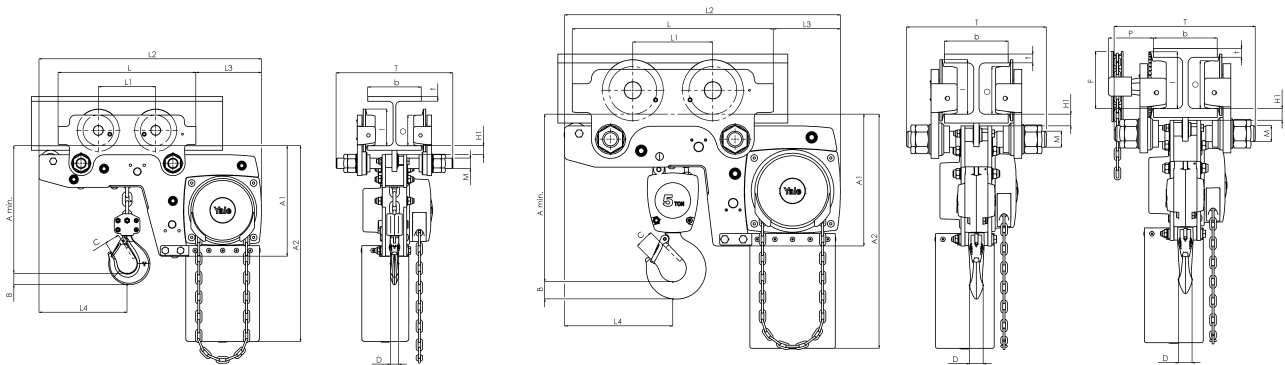
G = with geared trolley

! Yale hoists and trolleys are not designed for passenger elevation applications and must not be used for this purpose.

Hoisting Equipment Hand chain hoists

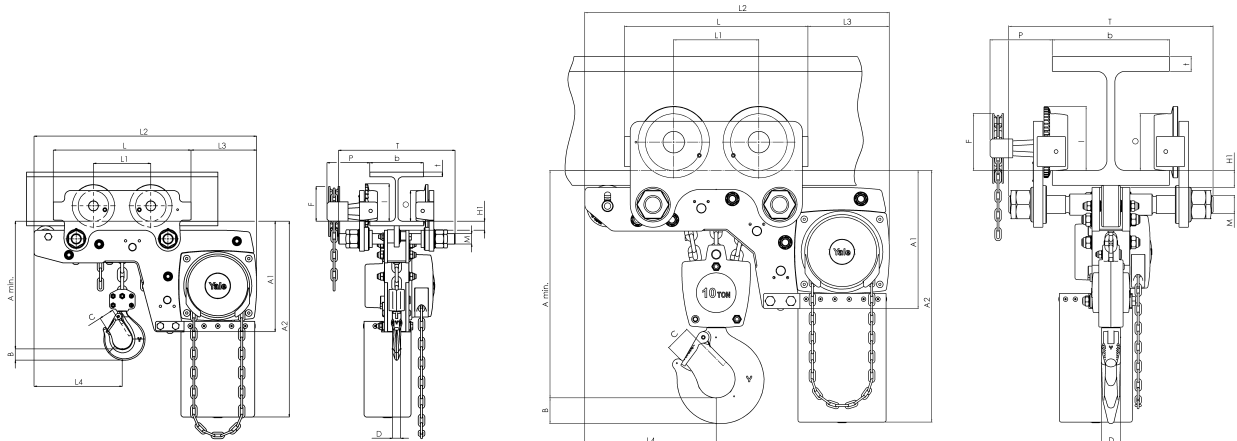
Dimensions model Yalelift LH

Model	YLLH 500	YLLH 1000	YLLH 2000	YLLH 3000	YLLH 5000	YLLH 10000
Amin., mm	188	211	264	316	425	565
A1, mm	223	250	289	346	345	365
A2, mm	381	427	511	614	612	665
B, mm	17	22	30	38	45	68
C, mm	24	29	35	40	47	68
D, mm	14	19	22	30	37	50
F (Geared), mm	92	92	91	107	150	150
H1, mm	24	24	24	32	31	45
I (Pushed), mm	72	72	96	131	143	170
I (Geared), mm	77	77	98	133	149	170
L, mm	270	310	360	445	525	485
L1, mm	130	130	150	180	209	225
L2, mm	444	488	582	690	720	805
L3, mm	124	135	172	203	175	215
L4, mm	184	201	230	265	283	348
M, mm	M 18	M 22	M 27	M 30	M 42	M 48
O, mm	60	60	80	112	125	150
P (Geared), mm	108	110	112	112	117	165
T (area A), mm	280	290	305	320	364	440
T (area B), mm	400	410	425	440	484	540



Model Yalelift LHP, 500 - 3000 kg

Model Yalelift LHP/LHG, 5000 kg



Model Yalelift LHG, 500 - 3000 kg

Model Yalelift LHG, 10000 kg



Depicted rubber buffers
optionally available.

! Yale hoists and trolleys are not designed for passenger elevation applications and must not be used for this purpose.

*Optionally available
with corrosion resp. spark
resistant features.*

Corrosion resistance CR

More life expectancy.

All models of the Yalelift programme can be supplied with corrosion resistant features which include zinc-plated load chain and stainless steel hand chain as standard.

! Corrosion protection

Corrosion starts on the surface of components due to reaction of environmental influences. This affects the mechanical properties of the components, e.g. breaking strength and total ultimate elongation. Many components are supplied in black (unmachined), bright (machined) or painted condition. This offers certain protection but after only a short period of time corrosion can begin.

With the application of a protective coating, the development of corrosion can be reduced and delayed, thus extending the service life of the treated components.

Applications for corrosion resistant units and zinc-plated resp. stainless steel load chains

Completely corrosion resistant units with either zinc-plated or stainless steel load chains should be used in all conditions with increased requirements towards corrosion protection. Typical applications are in food processing (e.g. dairy, abattoir, etc.), chemical industries (e.g. paper, dye industries), farming and sewage treatment.

Spark resistance

More safety.

All models of the Yalelift programme can be provided with the following optional features for additional protection against sparking:

- Load and hand chains from stainless steel
- Units are completely corrosion resistant
- Bronze-plated suspension and load hooks
- Solid bronze trolley wheels
- Buffers
- Chain container



Solid bronze trolley wheels.



Bronze-plated suspension and load hooks.

Overload protection

More control.

The overload protection device of the Yalelift programme reliably prevents excessive load take-up of the hoist during operation. When reaching the pre-set overload value, the unit will jam and stop operation in the lifting direction. Lowering of the load is still possible at any time. The overload protection device provides additional safety with regard to possible false estimation of the load weight and thus increases the lifetime of the hoist. The new design principle allows excellent adjustability and response.



Sparking protection

In nearly all industrial areas, and not only in the chemical industry, plants are operated in explosion endangered environments. Because of the great damage an explosion could cause to people and material values, special stringent legal and technical requirements are imposed on particularly electrical equipment used in explosion endangered environments.

Applications

Paint factories, paint shops, foundries, on-/offshore, refineries, oil depots, electroplating, automobile factories, on ships and docks, printers, textile and paper industries, food industries, glass and ceramic industries, wood working industries and hardening shops etc.

Locking device

More grip.

Yale trolleys can be attached with a locking device to secure the unit. (Parking position, e.g. shipping industry).

Chain container

More comfort.

The chain containers for Yalelift programme consist of a robust, powder-coated steel frame with a flexible chain bag made from high tensile Cordura textile fabric. Available in different sizes. Special sizes on request.





Swivel truck low headroom trolley hoist model VLRP and model VLRG

Capacity 250 - 6000 kg

The hand chain hoist series VLR with integrated manual trolley drive features extremely low headroom capabilities and provides optimal usage of the available storage space in confined areas.

Hand wheel and gear case are positioned outside the reach of the bottom flange, thus allowing the bottom block to be raised almost until the underside of the beam. The swivel truck feature of the trolley suspension enables travelling on extremely short radius curves.

Features

- All-steel construction with zinc-plated load and hand chains.
- The integrated swivel truck trolley suspension permits application on runways with extremely narrow radii.
- All units are built to order for a predetermined beam dimension. They cannot be adjusted retroactively to other beam sizes.
- Anti-drop devices and anti-tilt devices are standard features.
- The rotating hand chain guide allows side-pull of the trolley hand chain in travel direction.

Option

- Rubber buffers available on request.
- Chain container
- Overload prevention device.

! Beam profile and dimension as well as curve radius must always be specified when ordering.

Hoisting Equipment Hand chain hoists

Technical data model VLRP and model VLRG

Model	Capacity kg	Beam flange width min. mm	Beam flange width max. straight beam mm	Beam flange thickness max. mm	Min. radius curve m	Pull on hand chain at WLL daN	Net weight kg
VLRP 0.25	250	67	117	16	0.53	8	58
VLRP 0.5	500	67	117	16	0.5	16	58
VLRP 1.0	1000	76	117	16	0.5	32	58
VLRP 1.5	1500	86	140	16	0.76	26	113
VLRP 2.0	2000	86	140	16	0.76	35	115
VLRP 3.0	3000	102	178	16	1.0	19	158
VLRP 4.0	4000	102	178	16	1.0	27	160
VLRP 5.0	5000	117	203	22	1.2	33	213
VLRP 6.0	6000	117	203	22	1.2	41	213
VLRG 0.25	250	67	117	16	0.5	8	66
VLRG 0.5	500	67	117	16	0.5	16	66
VLRG 1.0	1000	76	117	16	0.5	32	66
VLRG 1.5	1500	86	140	16	0.76	26	122
VLRG 2.0	2000	86	140	16	0.76	35	123
VLRG 3.0	3000	102	178	16	1.0	19	172
VLRG 4.0	4000	102	178	16	1.0	27	175
VLRG 5.0	5000	117	203	22	1.2	33	227
VLRG 6.0	6000	117	203	22	1.2	41	227

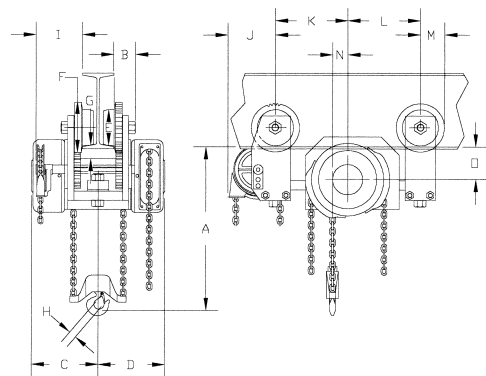
Dimensions model VLRP

Model	VLRP 0.25	VLRP 0.5	VLRP 1.0	VLRP 1.5	VLRP 2.0	VLRP 3.0	VLRP 4.0	VLRP 5.0	VLRP 6.0
A, mm	157	157	157	171	171	210	234	252	252
B, mm	51	51	51	56	56	68	65	71	71
C, mm	167	167	167	220	220	250	250	257	257
D, mm	167	167	167	220	220	250	250	257	257
E, mm	95	95	95	114	114	162	162	182	182
F, mm	127	127	127	152	152	203	203	229	229
G, mm	22	22	22	16	16	24	24	22	22
H, mm	25	25	25	29	29	34	42	42	42
K, mm	184	184	184	289	289	294	294	294	294
L, mm	165	165	165	194	194	195	195	223	223
M, mm	64	64	64	77	77	101	101	114	114
N, mm	35	35	35	77	77	77	77	77	77
O, mm	75	75	75	48	48	87	87	98	98

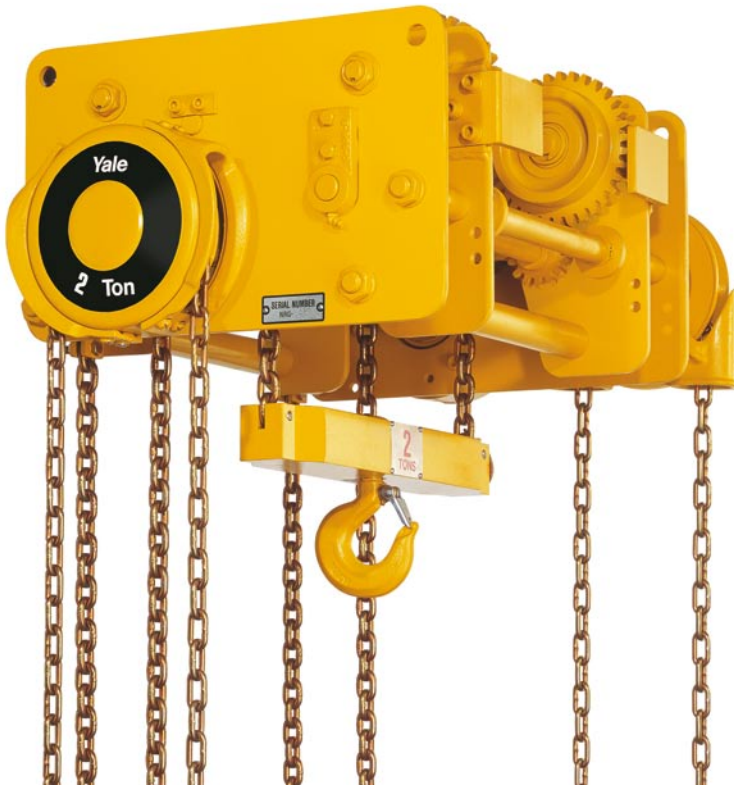


Dimensions model VLRG

Model	VLRG 0.25	VLRG 0.5	VLRG 1.0	VLRG 1.5	VLRG 2.0	VLRG 3.0	VLRG 4.0	VLRG 5.0	VLRG 6.0
A, mm	157	157	157	171	171	210	234	252	252
B, mm	51	51	51	56	56	68	65	71	71
C, mm	167	167	167	220	220	250	250	257	257
D, mm	167	167	167	220	220	250	250	257	257
E, mm	95	95	95	114	114	162	162	182	182
F, mm	127	127	127	152	152	203	203	229	229
G, mm	22	22	22	16	16	24	24	22	22
H, mm	25	25	25	29	29	34	42	42	42
I, mm	119	119	119	182	182	206	206	216	216
J, mm	95	95	95	159	159	155	155	176	176
K, mm	184	184	184	289	289	294	294	294	294
L, mm	165	165	165	194	194	195	195	223	223
M, mm	64	64	64	77	77	101	101	114	114
N, mm	35	35	35	77	77	77	77	77	77
O, mm	75	75	75	48	48	87	87	98	98



Model VLRP/VLRG



Compact low headroom trolley hoist with integrated push trolley model VNRP and model VNRG

Capacity 1500 - 24000 kg

On account of a special chain reeving system and corresponding chain guide the trolley hoist series VNR offers minimum headroom and maximum usage of the available room height. These hoists have been specially designed for heavy industrial applications.

Features

- All-steel construction with zinc-plated load and hand chains.
- All units are built to order for a predetermined beam dimension. They cannot be adjusted retroactively to other beam sizes.
- Anti-drop devices and anti-tilt devices are standard features.

Option

- Buffers
- Chain container

Technical data model VNRP and model VNRG

Model	Capacity kg	Lowest headroom hook dimension A mm	Min. radius curve m	Pull on hand chain at WLL daN	Net weight kg
VNRP 1.5	1500	159	1.98	19	95
VNRP 2.0	2000	159	1.98	25	96
VNRP 3.0	3000	188	1.98	20	140
VNRP 4.0	4000	203	2.3	26	141
VNRP 5.0	5000	223	2.6	36	263
VNRP 6.0	6000	223	2.59	43	263
VNRP 8.0	8000	280	2.89	30	298
VNRP 10.0	10000	292	3.0	40	469
VNRP 12.0	12000	292	-	47	469
VNRP 16.0	16000	346	-	31	734
VNRP 20.0	20000	438	-	40	895
VNRP 24.0	24000	438	-	47	895
VNRG 1.5	1500	159	1.98	19	105
VNRG 2.0	2000	159	1.98	25	107
VNRG 3.0	3000	188	1.98	20	153
VNRG 4.0	4000	203	2.3	26	156
VNRG 5.0	5000	223	2.59	36	290
VNRG 6.0	6000	223	2.60	43	290
VNRG 8.0	8000	280	2.89	30	354
VNRG 10.0	10000	292	3.0	40	507
VNRG 12.0	12000	292	-	47	507
VNRG 16.0	16000	346	-	31	771
VNRG 20.0	20000	438	-	40	968
VNRG 24.0	24000	438	-	47	968

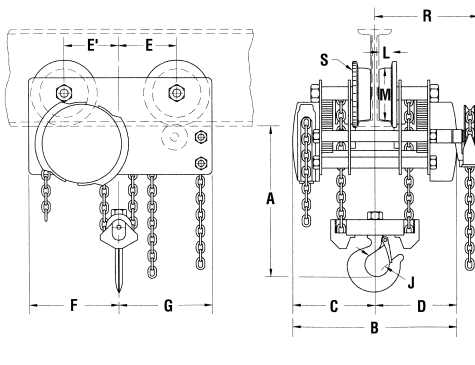
Hoisting Equipment Hand chain hoists

Dimensions model VNRP

Model	VNRP 1.5	VNRP 2.0	VNRP 3.0	VNRP 4.0	VNRP 5.0	VNRP 6.0	VNRP 8.0	VNRP 10.0	VNRP 12.0	VNRP 16.0	VNRP 20.0	VNRP 24.0
A, mm	159	159	159	203	222	222	279	292	346		438	438
B, mm	518	518	518	518	667	667	667	667	667	772	772	772
C, mm	259	259	259	259	333	333	333	333	333	386	386	386
D, mm	259	259	259	259	333	333	333	333	333	386	386	386
E, mm	130	130	168	168	187	187	225	216	216	302	308	308
E', mm	130	130	168	168	187	187	225	248	248	302	314	314
F, mm	222	222	270	270	305	305	356	397	397	473	489	489
G, mm	210	210	270	270	305	305	343	365	365	473	483	483
J, mm	29	29	34	34	34	34	52	57	57	76	92	92
L, mm	29	29	34	34	36	36	43	44	44	51	51	51
M, mm	114	114	162	162	183	183	210	248	248	298	298	298
R, mm	332	332	332	332	419	419	419	419	419	477	468	468
S, mm	152	152	203	203	229	229	254	297	297	343	343	343

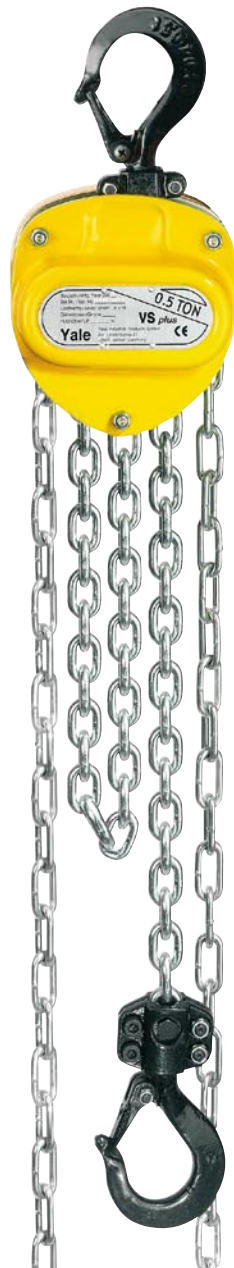
Dimensions model VNRG

Model	VNRG 1.5	VNRG 2.0	VNRG 3.0	VNRG 4.0	VNRG 5.0	VNRG 6.0	VNRG 8.0	VNRG 10.0	VNRG 12.0	VNRG 16.0	VNRG 20.0	VNRG 24.0
A, mm	159	159	159	203	222	222	279	292	292	346	438	438
B, mm	518	518	518	518	667	667	667	667	667	772	772	772
C, mm	259	259	259	259	333	333	333	333	333	386	386	386
D, mm	259	259	259	259	333	333	333	333	333	386	386	386
E, mm	130	130	168	168	187	187	225	216	216	302	308	308
E', mm	130	130	168	168	187	187	225	248	248	302	314	314
F, mm	222	222	270	270	305	305	356	397	397	473	489	489
G, mm	210	210	270	270	305	305	343	365	365	473	483	483
J, mm	29	29	34	34	34	34	52	57	57	76	92	92
L, mm	29	29	34	34	36	36	43	44	44	51	51	51
M, mm	114	114	162	162	183	183	210	248	248	298	298	298
R, mm	332	332	332	332	419	419	419	419	419	477	468	468
S, mm	152	152	203	203	229	229	254	297	297	343	343	343



Model VNRP/VNRG

Beam profile and dimension as well as curve radius must always be specified when ordering.



Hand chain hoist model VSplus

Capacity 500 - 5000 kg

The new Yale hand chain hoist VSplus is through further technical development the successor of our proven VS model. We set new standards with the extremely robust all-steel construction and high quality bearings for drive pinion, load chain sheave and gearbox. A maximum of corrosion prevention and maintenance friendliness are special features of this model.

Features

- 4 strong bolts between the side plates and the reinforced housing covers ensure increased stability.
- Precision machined guide rollers ensure smooth running of the load chain.
- Encapsulated, life-time lubricated bearings ensure a long service life.
- Brake system protected against the ingress of dust, foreign particles and corrosion.
- Zinc-plated load chain as standard for added corrosion protection.

Option

- Overload prevention device.
- Chain container
- Corrosion and acid resistant load and hand chains.

! Chain hoists in complete corrosion- and/or sparking resistance design on request.

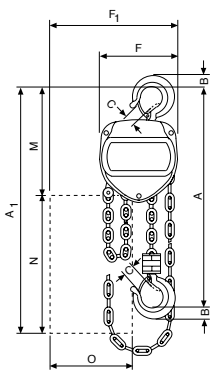
Hoisting Equipment Hand chain hoists

Technical data model VSplus

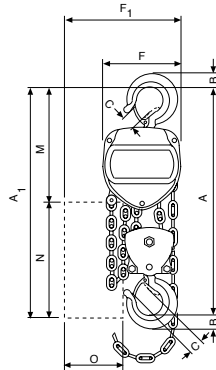
Model	EAN-No. 4025092*	Capacity kg	Number of chain falls	Chain dimensions d x p mm	Hand chain overhaul for 1 m lift m	Lift per 1 m hand chain overhaul mm	Pull on hand chain at WLL daN	Net weight at standard lift (3 m) kg
VSplus 0.5/1	*078832	500	1	6 x 18	28	35	26	9.0
VSplus 1.0/1	*078726	1000	1	6 x 18	42	23	36	11.2
VSplus 2.0/1	*079358	2000	1	8 x 24	54	18	54	18.0
VSplus 2.0/2	*079136	2000	2	6 x 18	84	12	37	15.3
VSplus 3.0/1	*079372	3000	1	10 x 30	83	12	52	28.0
VSplus 3.0/2	*079129	3000	2	8 x 24	108	9	41	24.7
VSplus 5.0/2	*079341	5000	2	10 x 30	165	6	44	38.7

Dimensions model VSplus

Model	VSplus 0.5/1	VSplus 1.0/1	VSplus 2.0/1	VSplus 2.0/2	VSplus 3.0/1	VSplus 3.0/2	VSplus 5.0/2
Amin., mm	320	370	450	530	530	620	620
A1, mm	455	484	596	491	644	596	644
B, mm	17	15	33	31	38	41	48
C, mm	29	30	33	34	38	37	43
D, mm	11	15	23	24	27	24	33
F, mm	125	147	183	147	215	183	215
F1, mm	213	232	314	232	333	314	333
J, mm	115	125	142	125	163	142	163
J1, mm	146	153	174	153	179	174	179
K, mm	51	57	68	57	79	68	79
L, mm	64	68	74	68	84	74	84
M, mm	195	224	266	231	316	286	334
N, mm	260	260	310	260	310	310	310
O, mm	140	140	200	140	200	200	200
P, mm	110	110	130	110	130	130	130



Model VSplus, 500 - 3000 kg, single fall



Model VSplus, 2000 - 5000 kg, double fall



Optional: Chain container

Yale hoists and trolleys are not designed for passenger elevation applications and must not be used for this purpose.



Hand chain hoist model Compact

Capacity 500 - 5000 kg

The new series Compact is designed and built for quality and safe, efficient operation. The arrangement of the spur gear drive allows a compact unit with very small dimensions.

Low headroom permits optimal usage of available space. Roller and ball bearings at all rotating parts reduce friction loss and increase smooth operation and efficiency. A lightweight hoist with low maintenance - and at economical price.

Features

- Automatic screw-and-disc type load brake with corrosion protected components.
- Zinc-plated load chain as standard for added corrosion protection.
- Forged suspension and load hooks, manufactured from non-aging, high alloy tempering steel, yield under overload instead of breaking.
- Two guide rollers and a heat treated load sheave with 4 precision machined chain pockets ensure smooth operation of the chain.
- The construction prevents a blocking and slipping of the hand chain.

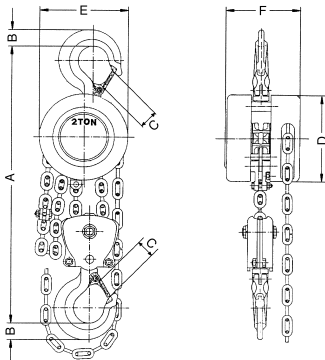
Hoisting Equipment Hand chain hoists

Technical data model Compact

Model	EAN-No. 4025092*	Capacity kg	Number of chain falls	Standard lifting height m	Chain dimensions d x p mm	Pull on hand chain at WLL daN	Net weight at standard lift (3 m) kg
Compact 500	*062053	500	1	3	6 x 18	26	8.7
Compact 1000	*062060	1000	1	3	6 x 18	36	10.6
Compact 2000	*062077	2000	2	3	6 x 18	37	15.0
Compact 3000	*062084	3000	2	3	8 x 24	41	23.4
Compact 5000	*062091	5000	2	3	10 x 30	44	37.5

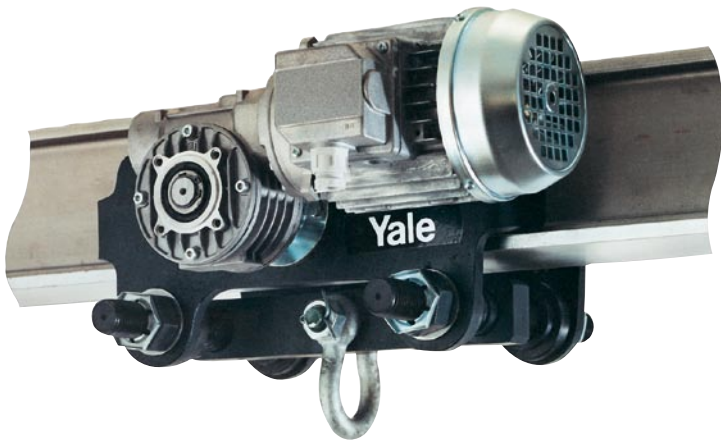
Dimensions model Compact

Model	Compact 500	Compact 1000	Compact 2000	Compact 3000	Compact 5000
A, mm	289	334	413	524	610
B, mm	16	21	27	35	45
C, mm	22	27	30	37	46
D, mm	120	142	142	178	210
E, mm	120	142	142	178	210
F, mm	106	122	122	139	162



Model Compact

Yale hoists and trolleys are not designed for passenger elevation applications and must not be used for this purpose.



Electric trolley model VTE-U

Capacity 1000 - 5000 kg

Specially recommended for loads over 1000 kg, for transporting over long distances and/or when used frequently. Suitable for almost all hoists with suspension hook due to universal shackle connection. Travel motor with worm gear transmission ensures smooth start and self braking - a separate motor brake is not required.

Features

- Standard operating voltage:
Euro-voltage 400V, 3-phases, 50Hz.
- Compact, robust frame with low overall height.
- Motors protected to IP 55 against dust and spray water. Encapsulated pendant control to IP 65.
- Single speed motors can be reconnected to 230V.
- Wheels manufactured from fracture-proof steel. Smooth running due to machined surfaces and ball bearing mounting. Cambered profile suitable for parallel and inclined beam profiles.
- Anti-tilt and anti-drop devices as standard.
- Easy adjusted to fit to a wide range of beam widths and profiles due to threaded spindles.

Option

- Low voltage control (42V).
- Rubber buffers



Wheel with cambered profile



Threaded spindle



Wheel fracture supports with option to fit buffers.

Hoisting Equipment Trolleys

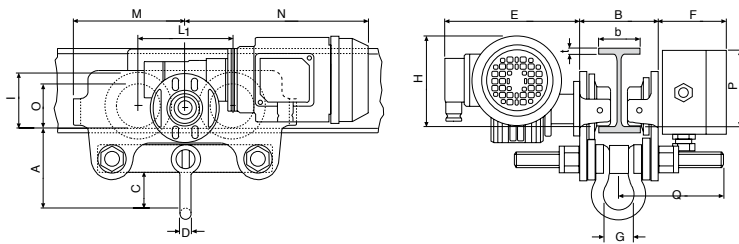
Technical data model VTE/VTEF

Model	EAN-No. 4025092*	Capacity kg	Travel speed m/min	Motor kW	Beam flange width mm	Beam flange thickness t mm	Min. radius curve m	Net weight kg
VTE 1-A-18/U*	*073547	1000	18 or 18/4.5	0.18 or 0.18/0.06	58 - 180	19	0.9	19.5
VTE 1-B-18/U*	*073585	1000	18 or 18/4.5	0.18 or 0.18/0.06	180 - 300	19	0.9	25.2
VTE 2-A-18/U*	*073561	2000	18 or 18/4.5	0.18 or 0.18/0.06	58 - 180	19	1.15	26.0
VTE 2-B-18/U*	*073608	2000	18 or 18/4.5	0.18 or 0.18/0.06	180 - 300	19	1.15	30.2
VTE 3-A-11/U	*073424	3000	11 or 11/2.8	0.37 or 0.3/0.09	74 - 180	27	1.5	51.0
VTE 3-B-11/U	*073509	3000	11 or 11/2.8	0.37 or 0.3/0.09	180 - 300	27	1.4	53.0
VTE 5-A-11/U	*073448	5000	11 or 11/2.8	0.37 or 0.3/0.09	98 - 180	27	2.0	77.0
VTE 5-B-11/U	*073523	5000	11 or 11/2.8	0.37 or 0.3/0.09	180 - 300	27	1.8	80.0

*11 or 11/2.8 m/min. Travel speed upon request

Dimensions model VTE/VTEF

Model	VTE 1-A-18/U	VTE 1-B-18/U	VTE 2-A-18/U	VTE 2-B-18/U	VTE 3-A-11/U	VTE 3-B-11/U	VTE 5-A-11/U	VTE 5-B-11/U
A, mm	113	113	115	115	139	139	161	161
B, mm	b + 50	b + 50	b + 54	b + 54	b + 60	b + 60	b + 70	b + 70
C, mm	49	49	47	47	57	57	60	60
D, mm	16	16	16	16	19	19	22	22
E, mm	187	187	187	187	202	202	202	202
F, mm	97	97	97	97	97	97	97	97
G, mm	43	43	43	43	51	51	58	58
H, mm	129	129	128	128	144	144	178	178
I, mm	77	77	98	98	133	133	149	149
L1, mm	130	130	150	150	180	180	209	209
M, mm	155	155	180	180	208	208	263	263
N1G, mm	255	255	255	255	292	292	292	292
N2G, mm	263	263	263	263	296	296	296	296
O, mm	60	60	80	80	112	112	125	125
P, mm	125	125	110	110	126	126	118	118
Q, mm	145	205	153	213	160	220	182	242



Model VTE

Yale hoists and trolleys are not designed for passenger elevation applications and must not be used for this purpose.



Push and geared type model HTP and model HTG

Capacity 500 - 20000 kg

The trolley enables the exact positioning or easy traversing of large loads with either manual or powered hoisting equipment.

Features

- It has excellent rolling features due to machined steel wheels mounted on prelubricated, encapsulated ball bearings.
- Adjustable to fit a wide range of beam widths and profiles (e.g. INP, IPE and IPB).
- The trolley wheels are designed for a max. beam profile incline of 14% (DIN 1025 - part 1), excellent rolling features are guaranteed by prelubricated, encapsulated ball bearings.
- Adjustments are made by rotating the clevis load bar which also ensures the centred positioning of the hoist in the clevis - no creeping to the left or the right.
- Trolleys and beam clamps have a min. fracture security of 5:1 in accordance with the UVV and machinery directives.
- They are tested with overload and supplied with a test certificate and an operating instructions manual which contains an EC declaration of conformity.

Option

- Buffers
- Locking device to secure the trolley in position on the beam (park position e.g. on ships).
- Rust and acid resistant hand chains.
- Corrosion resistant version.
- Spark resistant equipment.

! Yale hoists and trolleys are not designed for passenger elevation applications and must not be used for this purpose.

Technical data model HTP and model HTG

Model	EAN-No. 4025092*	Capacity kg	Size	Beam flange width b mm	Max. flange thickness t mm	Min. radius curve m	Effort at WLL kg	Net weight* kg	Net weight** with beam brake kg
HTP 500	*054874	500	A	50 - 220	25	0.9	3	8.0	14.5
HTP 1000	*054881	1000	A	50 - 220	25	0.9	6	9.0	17.0
HTP 2000	*054898	2000	A	66 - 220	25	1.15	7	16.0	24.0
HTP 3000	*054904	3000	A	74 - 220	25	1.4	7	32.0	41.2
HTP 5000	*054911	5000	A	90 - 220	25	1.8	9	48.0	58.5
HTP 500	*054928	500	B	160 - 300	40	0.9	3	10.6	17.1
HTP 1000	*054935	1000	B	160 - 300	40	0.9	6	12.0	20.0
HTP 2000	*054942	2000	B	160 - 300	40	1.15	7	19.3	27.3
HTP 3000	*054959	3000	B	160 - 300	40	1.4	7	35.8	45.0
HTP 5000	*054966	5000	B	180 - 300	40	1.8	9	52.2	62.7
HTG 500	*074711	500	A	50 - 220	25	0.9	3	9.7	16.2
HTG 1000	*074728	1000	A	50 - 220	25	0.9	6	11.2	19.2
HTG 2000	*074735	2000	A	66 - 220	25	1.15	7	18.0	26.0
HTG 3000	*074742	3000	A	74 - 220	25	1.4	7	35.4	44.6
HTG 5000	*074759	5000	A	90 - 220	25	1.8	9	51.8	62.3
HTG 500	*074766	500	B	160 - 300	40	0.9	3	12.6	19.1
HTG 1000	*074841	1000	B	160 - 300	40	0.9	6	14.1	22.1
HTG 2000	*074773	2000	B	160 - 300	40	1.15	7	21.3	29.3
HTG 3000	*074780	3000	B	160 - 300	40	1.4	7	39.2	48.4
HTG 5000	*074797	5000	B	180 - 300	40	1.8	9	56.0	66.5
HTG 8000	*074803	8000	B	125 - 310	40	1.8	14	104.0	-
HTG 10000	*074810	10000	B	125 - 310	40	1.8	14	104.0	-
HTG 15000	*074827	15000	B	125 - 310	40	5.0	29	230.0	-
HTG 20000	*074843	20000	B	125 - 310	40	5.0	29	230.0	-

*Net weight for HTG: without hand chain

**Net weight HTG with locking device: without hand chain



Trolleys are available with complete corrosion resistant coating and/or spark resistant versions.

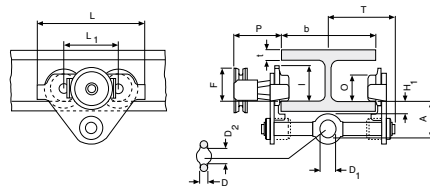
Hoisting Equipment Trolleys

Dimensions model HTP

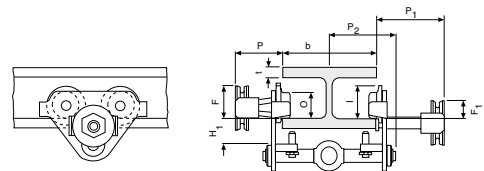
Model	HTP 500-A	HTP 1000-A	HTP 2000-A	HTP 3000-A	HTP 5000-A	HTP 500-B	HTP 1000-B	HTP 2000-B	HTP 3000-B	HTP 5000-B
A, mm	77	82.5	98.5	114	132.5	92	97.5	113.5	129	147.5
D, mm	16	17	22	26	33	16	17	22	26	33
D1, mm	25	30	40	48	60	25	30	40	48	60
D2, mm	30	35	47	58	70	30	35	47	58	70
F1, mm	46	46	46	46	45.5	46	46	46	46	45.5
H1, mm	30.5	30.5	30.5	30	30	45.5	45.5	45.5	45	45
I (HTP), mm	71.5	71.5	95.5	131	142.5	71.5	71.5	95.5	131	142.5
L, mm	260	260	310	390	450	260	260	310	390	450
L1, mm	130	130	150	180	209	130	130	150	180	209
O, mm	60	60	80	112	125	60	60	80	112	125
P1, mm	168	168	168	168	168	168	168	168	168	168
P2, mm	146	150	155	160	167.5	146	150	155	160	167.5
T, mm	146	150	155	160	167.5	187	187	189.5	191.5	191.5

Dimensions model HTG

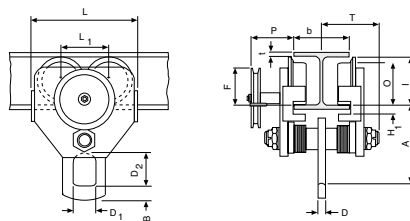
Model	HTG 500-A	HTG 1000-A	HTG 2000-A	HTG 3000-A	HTG 5000-A	HTG 500-B	HTG 1000-B	HTG 2000-B	HTG 3000-B	HTG 5000-B	HTG 8000-B	HTG 10000-B	HTG 15000-B	HTG 20000-B
A, mm	77	82.5	98.5	114	132.5	92	97.5	113.5	129	147.5	276	276	270	270
B, mm	-	-	-	-	-	-	-	-	-	-	52	52	70	70
D, mm	16	17	22	26	33	16	17	22	26	33	30	30	35	35
D1, mm	25	30	40	48	60	25	30	40	48	60	80	80	110	110
D2, mm	30	35	47	58	70	30	35	47	58	70	114	114	155	155
F (HTG), mm	91.5	91.5	90.5	107.5	149.5	91.5	91.5	90.5	107.5	149.5	113	113	113	113
F1, mm	46	46	46	46	45.5	46	46	46	46	45.5	-	-	-	-
H1, mm	30.5	30.5	30.5	30	30	45.5	45.5	45.5	45	45	45	45	45	45
I (HTG), mm	76.5	76.5	98	132.5	148.5	76.5	76.5	98	132.5	148.5	170	170	170	170
L, mm	260	260	310	390	450	260	260	310	390	450	430	430	870	870
L1, mm	130	130	150	180	209	130	130	150	180	209	200	200	200	200
L2, mm	-	-	-	-	-	-	-	-	-	-	-	-	115	115
O, mm	60	60	80	112	125	60	60	80	112	125	150	150	150	150
P (HTG), mm	110	110	110	110	110	110	110	110	110	110	163	163	163	163
P1, mm	168	168	168	168	168	168	168	168	168	168	-	-	-	-
P2, mm	146	150	155	160	167.5	146	150	155	160	167.5	-	-	-	-
T, mm	146	150	155	160	167.5	187	187	189.5	191.5	191.5	270	270	270	270



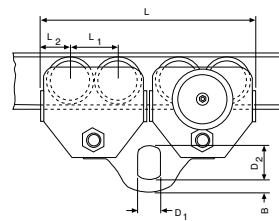
Model HTP/HTG, 500 - 5000 kg



Model HTP/G with locking device, 500 - 5000 kg



Model HTG, 10000 kg



Model HTG, 20000 kg

Swivel truck trolley with low headroom and extremely short radius curve model VLHP and model VLHG

Capacity 250 - 6000 kg

The manual trolley series VLH features extremely low headroom. The swivel truck construction allows negotiation of very short radius curves.

Features

- All-steel construction with low headroom.
- All units are built to order for a predetermined beam dimension. They cannot be adjusted retroactively to other beam sizes.
- Anti-drop devices and anti-tilt devices are standard features.

Option

- Buffers
- Large variety of special versions on request.



Beam profile and dimension as well as curve radius must always be specified when ordering.

Technical data model VLHP and model VLHG

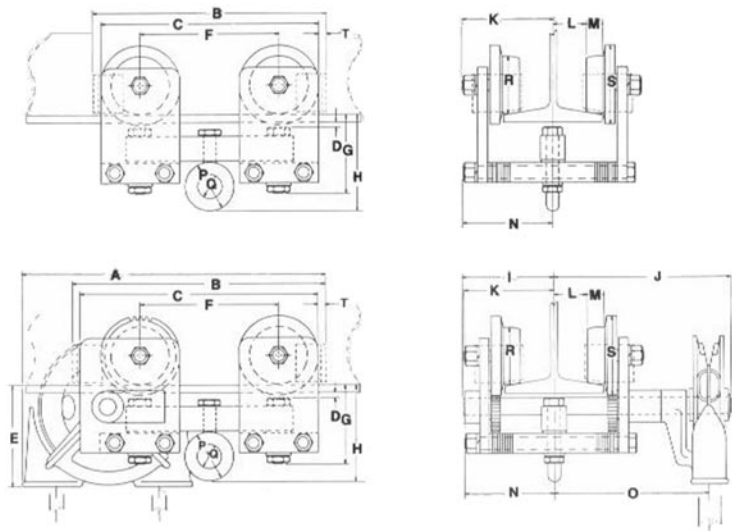
Model	Capacity kg	Beam flange width min. mm	Beam flange width max. on straight beams mm	Max. flange thickness mm	Min. curve radius mm	Net weight kg
VLHP 0.25	250	67	117	16	251	20
VLHP 0.5	500	67	117	16	251	20
VLHP 1.0	1000	76	117	16	251	27
VLHP 1.5	1500	86	140	16	495	38
VLHP 2.0	2000	86	140	16	495	38
VLHP 3.0	3000	102	178	16	391	71
VLHP 4.0	4000	102	178	16	391	71
VLHP 5.0	5000	117	203	22	860	125
VLHP 6.0	6000	117	203	22	860	125
VLHG 0.25	250	67	117	16	251	29
VLHG 0.5	500	67	117	16	251	29
VLHG 1.0	1000	76	117	16	251	35
VLHG 1.5	1500	86	140	16	495	48
VLHG 2.0	2000	86	140	16	495	48
VLHG 3.0	3000	102	178	16	391	85
VLHG 4.0	4000	102	178	16	391	85
VLHG 5.0	5000	117	203	22	860	140
VLHG 6.0	6000	117	203	22	860	140

Dimensions model VLHP

Model	VLHP 0.25	VLHP 0.5	VLHP 1.0	VLHP 1.5	VLHP 2.0	VLHP 3.0	VLHP 4.0	VLHP 5.0	VLHP 6.0
B, mm	298	298	330	413	413	476	476	565	565
C, mm	279	279	305	362	362	445	445	527	527
D, mm	8	8	8	6	6	6	6	5	5
F, mm	178	178	178	210	210	241	241	298	298
G, mm	103	103	111	114	114	165	165	194	194
H, mm	124	124	130	140	140	204	204	264	264
K, mm	114	114	121	127	127	152	152	194	194
L, mm	41	41	32	44	44	52	52	68	68
M, mm	22	22	28	29	29	34	34	48	48
N, mm	110	110	111	127	127	152	152	191	191
P, mm	64	64	64	76	76	95	95	140	140
Q, mm	32	32	32	38	38	51	51	76	76
R, mm	73	73	95	114	114	162	162	183	183
S, mm	92	92	127	152	152	203	203	229	229
T, mm	10	10	25	25	25	29	29	64	64

Dimensions model VLHG

Model	VLHG 0.25	VLHG 0.5	VLHG 1.0	VLHG 1.5	VLHG 2.0	VLHG 3.0	VLHG 4.0	VLHG 5.0	VLHG 6.0
A, mm	391	391	402	451	451	527	527	649	649
B, mm	324	324	343	413	413	476	476	565	565
C, mm	305	305	316	362	362	445	445	527	527
D, mm	6	6	8	6	6	6	6	6	6
E, mm	130	130	135	135	135	168	168	214	214
F, mm	178	178	178	210	210	241	241	298	298
G, mm	103	103	111	114	114	165	165	194	194
H, mm	124	124	130	140	140	204	204	264	264
I, mm	113	113	113	122	122	149	149	173	173
J, mm	232	232	232	222	222	248	248	287	287
K, mm	114	114	121	127	127	152	152	194	194
L, mm	40	40	32	44	44	52	52	68	68
M, mm	22	22	28	28	28	29	29	37	37
N, mm	110	110	111	127	127	152	152	191	191
O, mm	200	200	200	200	200	216	216	254	254
P, mm	64	64	64	76	76	95	95	140	140
Q, mm	32	32	32	38	38	51	51	76	76
R, mm	73	73	95	114	114	162	162	183	183
S, mm	102	102	127	152	152	203	203	229	229
T, mm	10	10	25	25	25	29	29	64	64



Trolley clamp model CTP

Capacity 1000 - 3000 kg

Easy fitting to overhead beams for the attachment and transport of loads.

Features

- Central threaded spindle provides quick adjustment to the required beam width.
- Threaded spindle and clevis are zinc-plated for added corrosion protection.

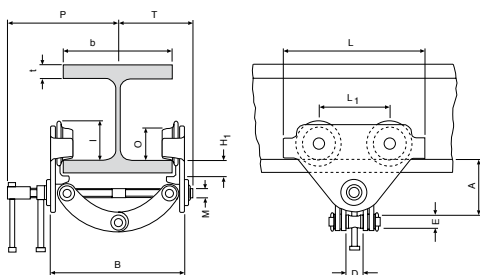


Technical data model CTP

Model	EAN-No. 4025092*	Capacity kg	Beam flange width b mm	Min. radius curve m	Weight kg
CTP 1-A	*063012	1000	60 - 150	0.6	2.5
CTP 2-A	*055437	2000	75 - 200	0.9	9.9
CTP 2-B	*055444	2000	200 - 300	0.9	10.3
CTP 3-A	*055451	3000	75 - 200	1.15	17.5
CTP 3-B	*055468	3000	200 - 320	1.15	19.5

Dimensions model CTP

Model	CTP 1-A	CTP 2-A	CTP 2-B	CTP 3-A	CTP 3-B
A, mm	82 - 109	106 - 155	136 - 191	128 - 171	150 - 212
D, mm	26	42	42	50	50
E, mm	22	20	20	22	22
H1, mm	20	24	24	30,5	30,5
I, mm	53	71.5	71.5	95.5	95.5
L, mm	160	260	260	310	310
L1, mm	75	130	130	150	150
M, mm	M12	M18	M18	M24	M24
O, mm	46	60	60	80	80
P, mm	153	205	255	220	280
T, mm	105	139	189	155	215
t max., mm	15	25	25	25	25



Model CTP

Yale hoists and trolleys are not designed for passenger elevation applications and must not be used for this purpose.



Beam clamp model YRC

Capacities 1.000 kg - 10.000 kg

Compact and rigid beam clamp to be used as a versatile rigging point for hoisting equipment and loads.

Features

- Extremely robust due to reinforced side plates and jaws, for a safe attachment point even under demanding conditions.
- Easy handling due to proven threaded spindle mechanism.
- Flattened clamping jaws for use even in confined spaces.

Technical data model YRC

Model	EAN-No. 4025092*	Capacity kg	Flange width mm	Weight kg
YRC 1	*080682	1000	75 - 230	4.8
YRC 2	*080699	2000	75 - 230	6.2
YRC 3	*080705	3000	80 - 320	12.6
YRC 5	*080712	5000	90 - 320	14.3
YRC 10	*080729	10000	90 - 320	24.0

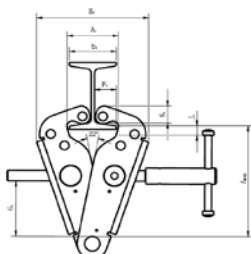
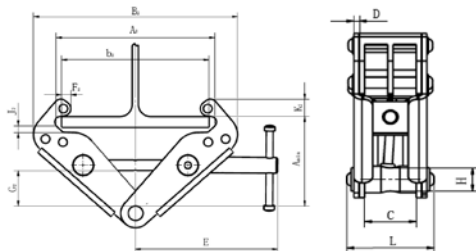
! Yale hoists and trolleys are not designed for passenger elevation applications and must not be used for this purpose.



Comparison YRC clamp (left) with standard YC clamp (right) – robust frame for demanding applications.

Dimensions model YRC

Model	YRC 1	YRC 2	YRC 3	YRC 5	YRC 10
Amin	135	135	183	183	202
Amax	165	165	224	224	241
A1	74	74	97	97	114
A2	238	238	330	330	340
B1	161	163	212	216	263
b1	68	68	80	80	90
B2	300	304	425	425	475
b2	230	230	320	320	320
C	45	58	69	69	69
D	4	6	8	10	12
E	212	212	303	303	304
F1	32	32	37	37	40
F2	19	19	30	30	31
G1	83	83	118	118	112
G2	53	53	79	79	80
H	28	28	32	32	44
J1	14	14	22	22	27
J2	26	26	37	37	41
K1	26	26	41	41	53
K2	26	26	32	32	40
L	77	97	117	125	133



Model YRC

- Also useable as a horizontal rigging point.
- Also applicable as lifting clamp.
- Optional: can be supplied with clevis end.

Beam clamp model YC

Capacity 1000 - 10000 kg

Provides a quick and versatile rigging point for hoisting equipment, pulley blocks or loads. Flexible application due to wide adjustment range. The central threaded spindle allows easy attachment and a safe and secure grip. The spindle can be secured against loosening.

Option

- Can be supplied with shackle.
- Small dimensions for applications at beams with a low base height.



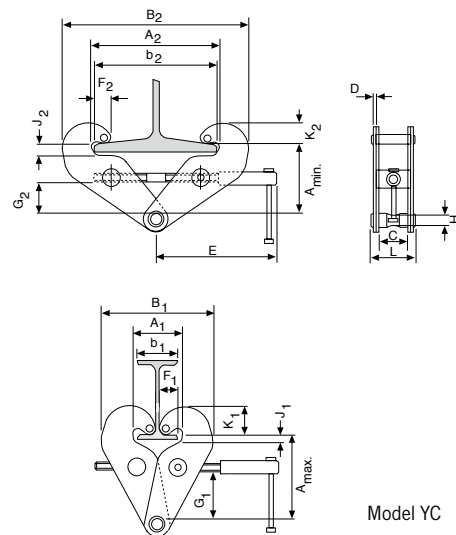
Technical data model YC

Model	EAN-No. 4025092*	Capacity kg	Beam flange width in mm	Weight kg
YC 1	*055154	1000	75 - 230	3.8
YC 2	*055161	2000	75 - 230	4.6
YC 3	*055192	3000	80 - 320	9.2
YC 5	*055208	5000	90 - 320	11.0
YC 10	*055215	10000	90 - 320	17.2

Dimensions model YC

Model	YC 1	YC 2	YC 3	YC 5	YC 10
Amin., mm	115	115	180	180	175
Amax., mm	150	150	225	225	220
A1, mm	78	78	80	90	90
A2, mm	246	246	320	310	320
B1, mm	186	186	232	242	268
B2, mm	350	350	455	445	480
b1, mm	75	75	80	90	90
b2, mm	230	230	320	310	320
C, mm	50	50	70	70	70
D, mm	4	6	8	10	14
E, mm	215	215	255	255	275
F1, mm	34	35	35	35	35
F2, mm	17	18	21	21	20
G1, mm	82	82	120	116	110
G2, mm	44	44	75	75	66
H, mm	20	20	22	28	38
J1, mm	14	14	30	30	34
J2, mm	21	21	34	34	35
K1, mm	48	50	60	60	60
K2, mm	31	32	40	42	40
L, mm	84	94	122	129	146

Yale hoists and trolleys are not designed for passenger elevation applications and must not be used for this purpose.



Model YC



Ratchet lever hoist with roller chain model C 85

Capacity 750 - 10000 kg

Ratchet lever hoist with link chain model D 85

Capacity 750 - 10000 kg

Enclosed housing with housing cover, handlever and bottom block made from high tensile white malleable cast iron for overall rugged construction.

Almost unlimited applications in maintenance, mining, construction, steel fabrication, shipbuilding and utility work. Ideal for moving and positioning heavy machines and securing heavy loads, simplifies setting pipes etc. in manholes and trenches.

Features

- The graphite cast iron load sheave for the link chain has precision machined chain pockets for accurate fit and durability of the load chain.
- The roller chain sprocket is made from heat treated chromium-molybdenum steel with precision machined teeth to ensure smooth chain movement.

Option

- All models can be optionally equipped with an overload prevention device in the form of a slip clutch which is factory preset to approx. 25% ± 15% overload.
- Free chaining device to quickly attach the load or to pull the chain through the hoist in both directions.

Since 1936 more than 1 million units have been built in Velbert.



Optional:
Overload protection for
D95 and C/D85.

This ratchet lever hoist is suitable for cargo tie down applications, since it has an automatic screw-and-disc type load brake preventing an unintentional loosening of the load.

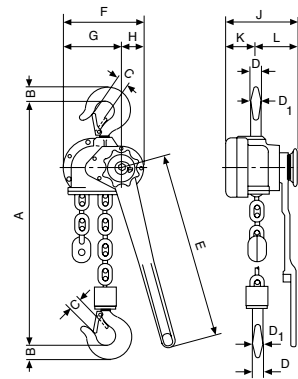
Hoisting equipment Ratchet lever hoists

Technical data model C 85

Model	EAN-No. 4025092*	Capacity kg	Number of chain falls	Chain dimensions d x p mm	Lift with one full lever turn mm	Handle pull at WLL daN	Net weight at standard lift (3 m) kg
Pul-lift C 85 750	*050173	750	1	5/8" x 3/8"	115	38	8.7
Pul-lift C 85 1500	*050180	1500	1	1" x 1/2"	45	31	17.0
Pul-lift C 85 3000	*050197	3000	1	1 1/4" x 5/8"	36	40	22.2
Pul-lift C 85 6000	*050203	6000	2	1 1/4" x 5/8"	18	44	38.0
Pul-lift C 85 10000	*050326	10000	3	1 1/4" x 5/8"	12	44	67.0

Dimensions model C85

Model	Pul-lift C 85 750	Pul-lift C 85 1500	Pul-lift C 85 3000	Pul-lift C 85 6000	Pul-lift C 85 10000
Amin., mm	322	389	403	560	785
B, mm	21	27	35	48	61
C, mm	27	30	34	46	54
D, mm	15	20	25	40	40
D1, mm	17	23	25	40	45
E, mm	443	443	570	570	570
F, mm	112	189	197	197	305
G, mm	56	134	142	142	163
H, mm	56	55	55	55	142
J, mm	142	171	179	218	218
K, mm	39	72	76	76	76
L, mm	103	99	103	142	142



Model C/D85

Technical data model D 85

Model	EAN-No. 4025092*	Capacity kg	Number of chain falls	Chain dimensions d x p mm	Lift with one full lever turn mm	Handle pull at WLL daN	Net weight at standard lift (3 m) kg
Pul-lift D 85 750	*050548	750	1	6 x 18.5	111	38	8.2
Pul-lift D 85 1500	*050555	1500	1	9 x 27	45	31	16.3
Pul-lift D 85 3000	*050562	3000	1	11 x 31	33	40	19.6
Pul-lift D 85 6000	*050579	6000	2	11 x 31	17	42	32.9
Pul-lift D 85 10000	*050784	10000	3	11 x 31	11	37	60.0

Dimensions model D 85

Model	Pul-lift D 85 750	Pul-lift D 85 1500	Pul-lift D 85 3000	Pul-lift D 85 6000	Pul-lift D 85 10000
Amin., mm	322	389	403	532	805
B, mm	21	27	35	48	61
C, mm	27	30	34	46	54
D, mm	15	20	25	40	40
D1, mm	17	23	25	40	45
E, mm	443	443	570	570	570
F, mm	112	189	197	197	305
G, mm	56	134	142	142	163
H, mm	56	55	55	55	142
J, mm	142	171	179	218	218
K, mm	39	72	76	76	76
L, mm	103	99	103	142	142

! Yale hoists and trolleys are not designed for passenger elevation applications and must not be used for this purpose.



Ratchet lever hoist with link chain model D 95

Capacity 1500 - 3000 kg

The D 95 in its cast malleable iron design has taken key technical features from the proven D 85 but excels due to low tare weight and an extremely small measurement between suspension and load hooks.

A versatile unit for moving, positioning and securing loads.

Features

- It has an automatically acting load pressure brake which works on the self-locking principal. For example, when used to secure loads an unintentional loosening of the brake is prevented when the load vibrates.
- Alloyed steel link chain with zinc-plated resp. yellow chromated finish, in accordance with national and international standards and regulations.
- Standard free chaining device to quickly attach the load or to pull the chain through the hoist in both directions.
- Body and handlever made from impact resistant malleable cast iron.
- The short ergonomic handlever is fitted with a rubber grip.

Option

- All models can be optionally equipped with an overload prevention device in the form of a slip clutch which is factory preset to approx. 25% ± 15% overload.
- Hoist with sling chain.

This ratchet lever hoist is suitable for cargo tie down applications, since it has an automatic screw-and-disc type load brake preventing an unintentional loosening of the load.



Pul-lift D95 with sling chain.

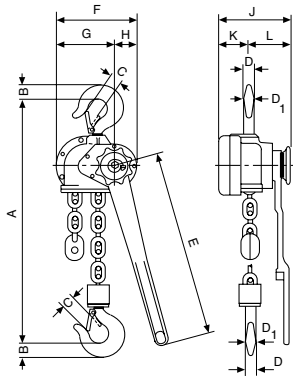
Hoisting equipment Ratchet lever hoists

Technical data model D95

Model	EAN-No. 4025092*	Capacity kg	Number of chain falls	Chain dimensions d x p mm	Lift with one full lever turn mm	Handle pull at WLL daN	Net weight at standard lift (3 m) kg
Pul-lift D95 1500	*050807	1500	1	6.2 x 18.5	35	27	9.9
Pul-lift D95 3000	*050821	3000	1	9 x 27.2	38	49	16.5

Dimensions model D95

Model	D95 1500	D95 3000
Amin., mm	314	376
B, mm	23	30
C, mm	23	25
D, mm	18	22
D1, mm	18	22
E, mm	315	443
F, mm	156	189
G, mm	112	134
H, mm	44	55
J, mm	141	177
K, mm	49,5	72
L, mm	92	105



Pul-lift D95



! Yale hoists and trolleys are not designed for passenger elevation applications and must not be used for this purpose.



Ratchet lever hoist model AL

Capacity 750 - 3000 kg

The enclosed housing, hand lever and hand wheel are made from high quality aluminium. Due to precise needle bearings the hoist can be operated with little effort. Its low tare weight is an advantage. When the hoist has to be frequently carried over longer distances to different assignments. This universal ratchet hoist should not be missing in any service truck. The chain guide is cast into the body to ensure faultless chain movement. The standard free chaining device serves to quickly attach the load or to pull the chain through the hoist in both directions.

Features

- Alloyed steel link chain with zinc-plated resp. yellow chromated finish, in accordance with national and international standards and regulations.
- Smooth running free chaining device as standard.
- Low effort on hand lever.



! All ratchet lever hoists can be used for load attachment according to EN 12195.

! Yale hoists and trolleys are not designed for passenger elevation applications and must not be used for this purpose.

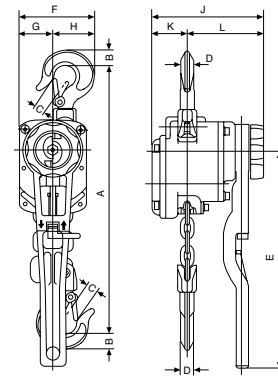
Hoisting equipment Ratchet lever hoists

Technical data model AL

Model	EAN-No. 4025092*	Capacity kg	Number of chain falls	Chain dimensions d x p mm	Lift with one full lever turn mm	Handle pull at WLL daN	Net weight at standard lift (3 m) kg
AL 750	*051194	750	1	6.3 x 19.1	30	16	6.4
AL 1000	*051200	1000	1	6.3 x 19.1	30	22	6.6
AL 1500	*051217	1500	1	7.1 x 21.2	16	18	10.0
AL 3000	*051224	3000	1	10 x 30.2	14	28	18.0

Dimensions model AL

Model	AL 750	AL 1000	AL 1500	AL 3000
Amin., mm	315	325	380	455
B, mm	20	23	27	36
C, mm	22	23	26	33
D, mm	14	16	20	24
E, mm	300	300	300	400
F, mm	106	109	138	168
G, mm	47	47	60	75
H, mm	59	62	78	93
J, mm	154	154	177	212
K, mm	49	49	74	94
L, mm	105	105	103	118



Model AL





! All ratchet lever hoists can be used for load attachment according to EN 12195.

Ratchet lever hoist model PT

Capacity 800 - 6300 kg

The new generation of ratchet lever hoists model PT features improved techniques and ergonomic styling. The advantages of the predecessor range have been maintained and further optimized.

A good, versatile, all round ratchet lever hoist for demanding conditions.

Features

- The proven stamped steel housing provides extremely low weight without limiting the reliability and sturdiness of the unit.
- The free chaining device is standard, low handle pull in spite of increased capacities as well as small hook-to-hook dimensions are further outstanding features.
- Alloyed steel link chain with zinc-plated resp. yellow chromated finish, in accordance with national and international standards and regulations.
- Drop forged suspension and load hooks are made from non-aging, high tensile steel and fitted with robust safety latches.
- Short ergonomic handlever with a rubber grip for safe and easy operation.

Option

- Overload prevention device



Optional:
Overload prevention

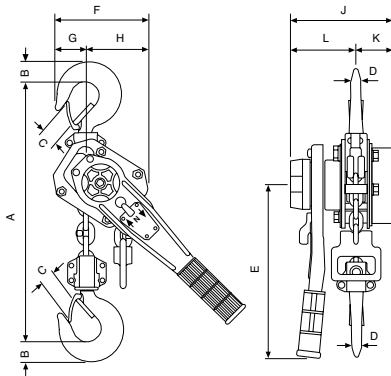
Hoisting equipment Ratchet lever hoists

Technical data model PT

Model	EAN-No. 4025092*	Capacity kg	Number of chain falls	Chain dimensions d x p mm	Lift with one full lever turn mm	Handle pull at WLL daN	Net weight at standard lift (3 m) kg
PT 800	*076463	800	1	5.6 x 17.1	24	26	5.5
PT 1600	*076470	1600	1	7.1 x 21.2	23	30	9.6
PT 3200	*076487	3200	1	9 x 27.2	16	38	16.0
PT 6300	*076494	6300	2	9 x 27.2	8	39	31.0

Dimensions model PT

Model	PT 800	PT 1600	PT 3200	PT 6300
Amin., mm	290	330	430	580
B, mm	21	27	36	53
C, mm	24	31	35	46
D, mm	13	20	24	43
E, mm	235	370	370	370
F, mm	120	138	177	259
G, mm	38	41	53	85
H, mm	82	97	124	174
J, mm	142	163	185	185
K, mm	52	65	83	83
L, mm	90	98	102	102



Model PT

Yale hoists and trolleys are not designed for passenger elevation applications and must not be used for this purpose.



Ratchet lever hoist model UNO

Capacity 750 - 6000 kg

The standard free chaining device serves to quickly attach the load or to pull the chain through the hoist in both directions. A hand lever hoist with a robust stamped steel construction and compact design.

The low tare weight and a smooth free chaining device make the UNO a handy, universal tool.

Features

- Forged suspension and load hooks, manufactured from non-aging, high alloy tempering steel, yield under overload instead of breaking.
- Alloyed steel link chain with zinc-plated resp. yellow chromated finish, in accordance with national and international standards and regulations.
- The chain guide is integrated into the housing to eliminate fouling and jamming of the chain on the load sheave.
- Robust chain stop.
- The standard free chaining device serves to quickly attach the load.
- Ergonomic handlever with rubber grip.
- Hard chromium plated hand wheel.
- Automatic screw-and-disc type load brake with corrosion protected components.
- Sturdy bottom block with encapsulated bolt connections.
- Due to optimized gearing a minimum effort is required to operate the short hand lever.

! All ratchet lever hoists can be used for load attachment according to EN 12195.

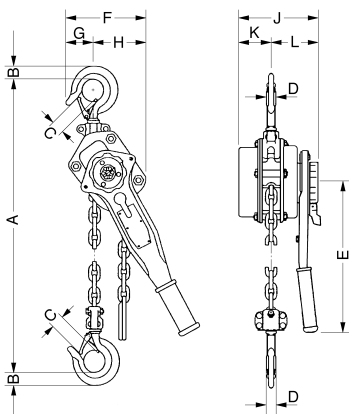
Hoisting equipment Ratchet lever hoists

Technical data model Uno

Model	EAN-No. 4025092*	Capacity kg	Number of chain falls	Chain dimensions d x p mm	Lift with one full lever turn mm	Handle pull at WLL daN	Net weight at standard lift (3 m) kg
Uno 750	*062275	750	1	6 x 18	20	14	7
Uno 1500	*062282	1500	1	8 x 24	22	22	11
Uno 3000	*062299	3000	1	10 x 30	17	34	21
Uno 6000	*062305	6000	2	10 x 30	9	35	30

Dimensions model Uno

Model	Uno 750	Uno 1500	Uno 3000	Uno 6000
Amin., mm	295	380	420	570
B, mm	21	29	37	54
C, mm	24	32	35	44
D, mm	13	20	24	43
E, mm	235	350	350	350
F, mm	111	140	174	239
G, mm	33	49	60	77
H, mm	78	91	114	162
J, mm	142	166	184	184
K, mm	55	66	79	79
L, mm	87	100	105	105



Model Uno

! Yale hoists and trolleys are not designed for passenger elevation applications and must not be used for this purpose.



Ratchet lever hoist model Yalehandy

Capacity 250 - 500 kg

This hoist is the smallest, lightest Yale ratchet lever hoist for professional applications.

Due to the multitude of application possibilities e.g. in industry, trade and service this new ratchet lever hoist is indispensable.

The extreme low tare weight and the very compact design make the hoist easy to use even in confined working conditions.

Features

- The drop forged suspension and load hooks, that yield under overload instead of breaking, are made from non-aging, high tensile alloy steel.
- The hooks are fitted with robust safety latches and are free to rotate 360°.
- The short and ergonomic handlever makes the hoist easy to operate.
- The enclosed design protects the internal parts from contamination.
- All parts of the disc type load brake are manufactured from high quality materials and are corrosion protected.

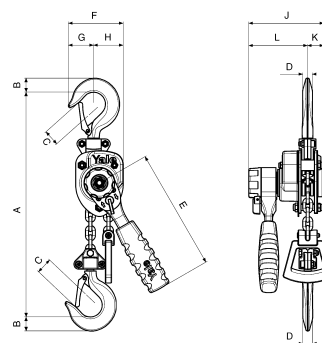
All ratchet lever hoists can be used for load attachment according to EN 12195.

Technical data model Yalehandy

Model	EAN-No. 4025092*	Capacity kg	Number of chain falls	Chain dimensions d x p mm	Lift with one full lever turn mm	Handle pull at WLL daN	Net weight at standard lift (3 m) kg
Yalehandy 250	*075039	250	1	4 x 12	80	25	2.2
Yalehandy 500	*077675	500	1	4 x 12	40	25	2.8

Dimensions model Yalehandy

Model	Yalehandy 250	Yalehandy 500
Amin., mm	240	282
B, mm	20	17
C, mm	21	24
D, mm	14	12
E, mm	160	160
F, mm	72	104
G, mm	33	38
H, mm	39	66
J, mm	98	116
K, mm	21	36
L, mm	77	80



Model Yalehandy, 250 - 500 kg



drop forged hooks

... and is

1:1

just that big!

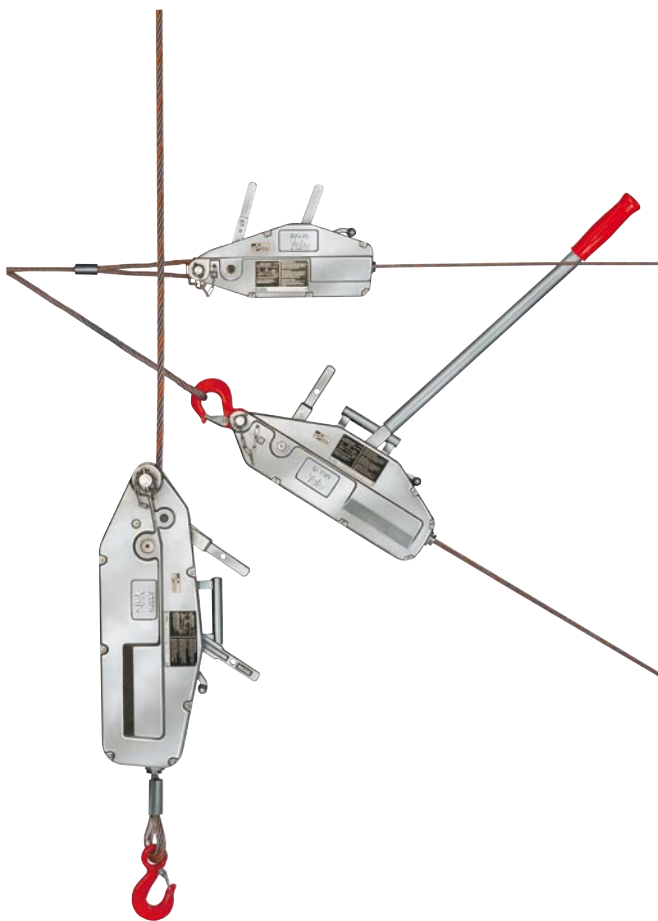
free chaining device
as standard

handlever with
rubber grip

240mm

extremely
low headroom

high tensile zinc-plated
link chain



! Yaletrac cable pullers are approved for passenger transportation in suspended access equipment acc. to DIN EN 1808.

Cable puller model Yaletrac

Pulling force 800 - 3200 daN

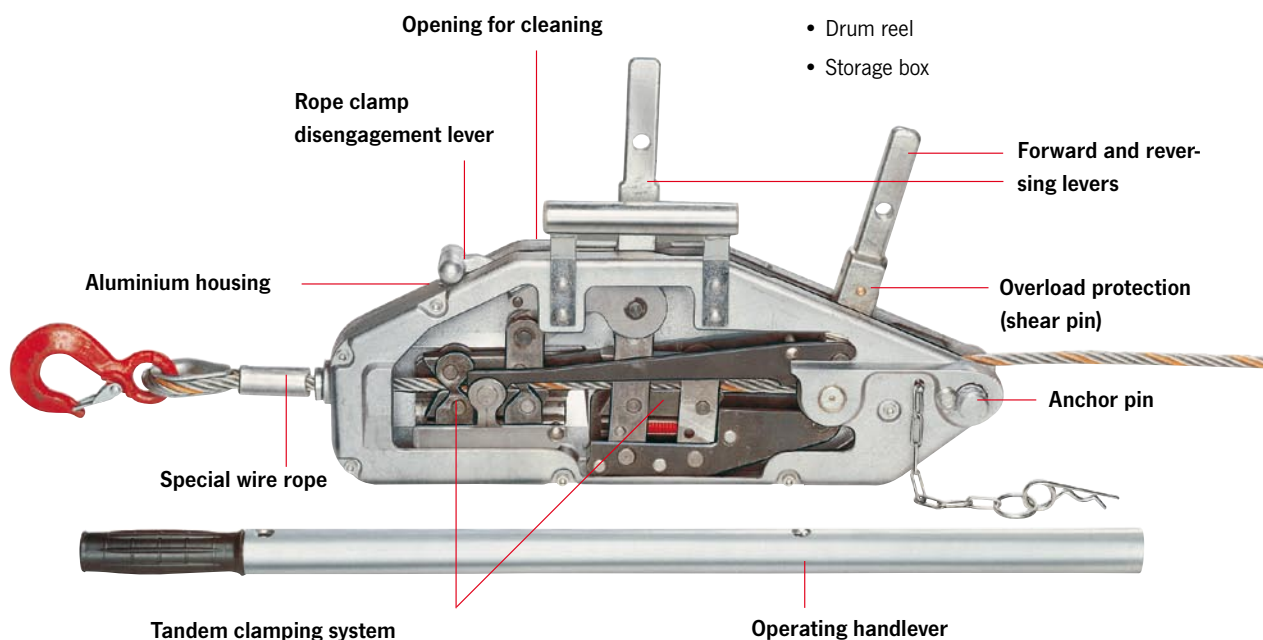
It has a light weight, compact, high strength aluminium alloy housing with a large flat bottom surface for increased stability in horizontal as well as vertical working position.

Features

- Forward and reversing levers in tandem provide slim design and assure power transfer along the centre line.
- Overload protection is by a shearing pin in the forward lever. Spare shear pins are conveniently located in the carrying handle or operating lever. A broken pin can be replaced without removing the load.
- A lever disengages the rope clamp system allowing easy, smooth installation of the wire rope.
- Yaletrac uses a special flexible wire rope. It has six strands with a steel core and is identified by an orange strand. The rope is tapered at one end for easy threading and fitted with an eye sling hook with safety latch on the other end.
- The parallel arrangement of the clamping system protects the wire rope by distributing the clamping forces evenly. A long rope advance per each lever stroke increases the working speed.
- The large opening in the top of the unit allows easy cleaning: simply flush the unit with water, apply motor oil for lubrication and the Yaletrac is again ready for use.

Option

- Eye sling hook with safety latch
- Longer ropes
- Drum reel
- Storage box

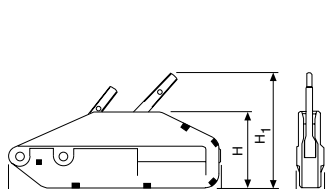


Technical data model Yaletrac

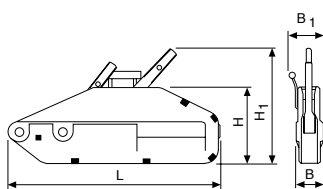
Model	EAN-No. 4025092*	Capacity (WLL) kg	Rope advance per double stroke in mm	Lever pull at WLL daN	Lever length mm	Rope diameter mm	Weight without rope kg	Rope weight kg/m
Y 08	*051811	800	60	24	800	8.4	7	0.29
Y 16	*051828	1600	60	30	790/1190	11.5	14	0.53
Y 32	*078870	3200	40	50	790/1190	16.0	21	1.00

Dimensions model Yaletrac

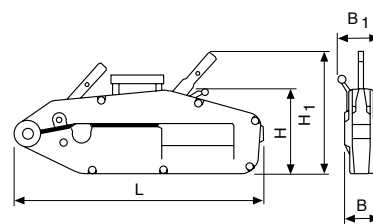
Model	Y 08	Y 16	Y 32
L, mm	430	545	680
H, mm	168	190	230
H1, mm	240	270	330
B, mm	60	72	91
B1, mm	-	97	110



Model Y08



Model Y16



Model Y32



Optional: Yaletrac storage box made from steel plate, approx. 74 x 26 x 45 cm



Optional: Eye sling hook with safety latch

Complementary products available like cable grips (page 80), pulley blocks (page 81) and textile slings (pages 325, 328).



Yale cable puller LP

Capacity 500 kg

A practical aid for pulling, lifting, tensioning and lowering in many applications in- and outdoors.

A compact, handy tool - ideal for service and assembly, for workshops and recreation.

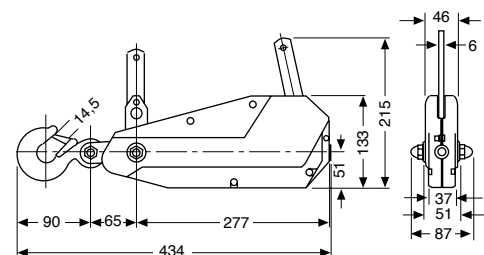
Features

- The stamped steel housing is lightweight and resistant.
- The complete set comprises of a cable puller with anchor bolt and eye sling hook, telescopic operating lever, 10 metres of wire rope, carrying handle and a webbing sling of 1 metre length which can be used as a rigging point.

Technical data model LP

Model	EAN-No. 4025092*	Capacity (WLL) kg	Rope advance per double stroke mm	Lever pull at WLL daN	Lever length mm	Rope diameter mm	Weight without rope and lever kg
LP 500	*051804	500	35	15	600	8.3	4

! Yale hoists and trolleys are not designed for passenger elevation applications and must not be used for this purpose.



Model LP

Yale cable puller model LM

Pulling force 500 - 1800 daN

The use of aluminium alloy castings provide a lightweight, corrosion resistant unit for pulling and tensioning applications. The double interlocking pawl system ensures safe function, all load bearing shafts are mounted on prelubricated bearings to reduce wear.

Features

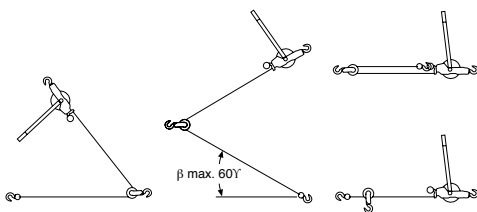
- All springs and shafts are manufactured from stainless steel. The lifting medium is a non-twisting, zinc-plated, special steel wire rope.
- The hooks are fitted with safety latches and are free to rotate 360°.
- The cable puller LM can be used in single or double fall configuration. In double fall configuration the pulling force is doubled and the lifting height is halved.



! Yale hoists and trolleys are not designed for passenger elevation applications and must not be used for this purpose.

Technical data model LM

Model	EAN-No. 4025092*	1 legged design pulling force daN	1 legged design hook path m	1 legged design headroom mm	2 legged design pulling force daN	2 legged design hook path m	2 legged design headroom mm	Net weight kg	Lever length mm	Hook opening mm	Rope diameter mm
115 DV-B	*077293	500	4.6	550	1000	2.3	700	4.5	420	22	4.8
202 WN-VB	*077309	500	6.0	525	1000	3.0	690	5.2	520	22	4.8
434 WN-VB	*077316	500	9.0	550	1000	4.5	710	5.8	530	22	4.8
S 434 WN-VB	*077491	700	6.0	565	1400	3.0	725	6.0	530	22	5.6
S 404 WN-VB	*077323	900	5.2	575	1800	2.6	720	5.9	635	22	6.4



Rigging configurations - Attention! reduced capacity

! The units may only be used for pulling and tensioning. Lifting and lowering of loads is not permitted.



Cable grip model LMG

Pulling force 2000 - 5000 daN

The LITTLE MULE® cable grip is a device for gripping, pulling and tensioning uncoated wire ropes, cables and metal rods in all forms up to a tensile strength of 1770 N/mm² but is dependant on the diameter and surface condition.

The parallel jaws provide a firm, non-slip grip without causing damage to the wire rope. A special spring-loaded guide prevents the grip from dropping off the wire rope and allows instant release without jamming.

The model LMG II-X is supplied with grooved jaws and is suitable for wire ropes with a tensile strength of up to 1960 N/mm², but is dependant on the rope diameter and surface condition.

Technical data model LMG

Model	EAN-No. 4025092*	Pulling force kg	For cable diameter mm	Eye opening mm	Weight kg
LMG I	*052214	2000	5 - 15	31 x 44	1.6
LMG II	*052221	3000	8 - 20	31 x 44	2.9
LMG II-X	*052245	3000	8 - 20	31 x 44	2.9
LMG III	*052238	5000	18 - 32	66 x 93	9.5

Pulley blocks, hinged, with single steel sheave

Capacity 1000 - 6400 kg

One side of the Yale pulley blocks is hinged and can be opened for easy and quick positioning of the wire rope on the sheave. It can also provide a quick and versatile rigging point or redirect a wire rope.

Features

- Swinging the hook in the direction of pull securely locks the pulley block.
- The high quality cast steel sheaves have machined grooves and are fitted with Permaglide® bushes.
- When choosing and classifying pulley blocks, take the „Principles for Rope Drives“ DIN 15020 into consideration.



Technical data pulley blocks

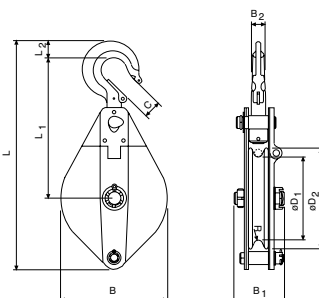
Model	EAN-No. 4025092*	Capacity kg	Rope diameter mm	Weight kg
Pulley block 1000	*455817	1000	7	3.3
Pulley block 2000	*455794	2000	13	8.9
Pulley block 3200	*455800	3200	15	15.5
Pulley block 6400	*455824	6400	18	26.5

Dimensions pulley blocks

Model	Pulley block 1000	Pulley block 2000	Pulley block 3200	Pulley block 6400
B, mm	118	199	230	270
B1, mm	76	92	108	116
B2, mm	17	24	28	35
C, mm	23	27	31	42
ØD1, mm	85	150	180	210
ØD2, mm	105	190	220	260
L, mm	305	425	496	655
L1, mm	200	263	295	375
L2, mm	23	30	40	47
R, mm	4	7	9	10



Optional: Can be supplied with a clevis fitting.



Model Pulley blocks

Yale hoists and trolleys are not designed for passenger elevation applications and must not be used for this purpose.

Electric wire rope winch model RPE

Pulling force 250 - 1000 daN

Wire rope winches series RPE and RPA are designed explicitly for performance, efficiency and safety and offer many advantages and options. RPE's and RPA's extremely compact, practical cube design and universal rope lead-offs allow individual applications in almost any position and make them powerful aids for lifting and pulling loads.

The winches are designed to DIN 15020, classification 1 Bm, safety regulation BGV D8 (winch, lift and pull equipment) and, of course, the EC machinery directives.

Features

- Compact dimensions due to internal brake motor.
- Standard: Euro-voltage 400V/230V, 3-phase, 50 Hz, protected to IP 54, insulation class F.
- Adjustable slip clutch to protect the winch from overloading standard for model RPE 10-6.
- Spur gear transmission with helical first gear ensures smooth motion. Lubricated by grease and can, therefore, be used in any position.
- Spring pressure disc brake incorporated in the motor holds the load secure even in the event of a power failure.
- Plain rope drum standard.
- The rope is secured to the drum in a recess so that the rope can be wound onto the drum in several layers without damage.
- The standard version comes with direct control.
- Integrated emergency stop.



Rope attachment



Spring pressure disc brake



Brake motor

! When selecting the length of the rope please bear in mind that a minimum of 2.5 windings have to remain on the drum (approx. 1 m rope).

Option

- Different drum designs, e.g. extended to accommodate longer rope, machined grooves for exact reeling, with separation web and 2nd rope outlet for working with two ropes.
- Geared limit switches to limit rope motion in both directions.
- Single-phase A.C. motor 230V, 50Hz, for mobile application of the winch. Control by means of pendant control including control switch with emergency stop and 2 m long control cable.
- Contactor control with 42V control voltage.
- Slack rope switch to automatically stop the winch when rope tension eases e.g. when the load touches down (only in combination with low voltage control).
- Frequency converter for stepless speed control.
- Adjustable slip clutch to protect the winch from overloading for models RPE 2-13, RPE 5-6 and RPE 5-12.
- Special design according to BGV C1 for theater stage applications available.



Available in corrosion proof version on request.

Special designs on request.



Single-phase A.C. motor



Geared limit switches



Gearbox with slip clutch



Different drum designs

Technical data model RPE

Model	EAN-No. 4025092*	Pulling force*	Lifting speed*	Rope diameter	Motor	ED at 120 c/h	Useable rope length in the 1 st layer	Useable rope length in the 2 nd layer	Useable rope length in the 3 rd layer	Useable rope length in the 4 th layer	Weight without rope
		daN	m/min	mm	kW	%	m	m	m	m	kg
RPE 2-13	*071796	250	13.0	4	0.55	40	11.2	24.4	38.8	54.5	31.8
RPE 5-6	*071857	500	6.5	6	0.55	40	7.0	16.4	27.0	38.8	32.8
RPE 5-12	*071918	500	12.0	6	1.1	40	11.0	24.9	39.7	55.4	41.0
RPE 9-6	*071956	990	6.0	8	1.1	40	10.2	23.0	37.4	-	76.0
RPE 10-6**	*072014	1000	6.0	8	1.1	40	10.2	23.0	37.4	-	76.9

*In the top rope layer **With slip clutch

Hoisting equipment Electric wire rope winches

Plain drum (longer useable rope length)

Model	Pulling force in top layer daN	Drum size	Max. rope length m
RPE 2-13 L	250	2	80
RPE 5-6 L	500	2	58
RPE 9-6/10-6 L	990/1000	2	56
RPE 2-13 XL	250	3	200
RPE 5-6 XL	500	3	140
RPE 5-12 XL	500	3	140
RPE 9-6/10-6 XL	990/1000	3	100

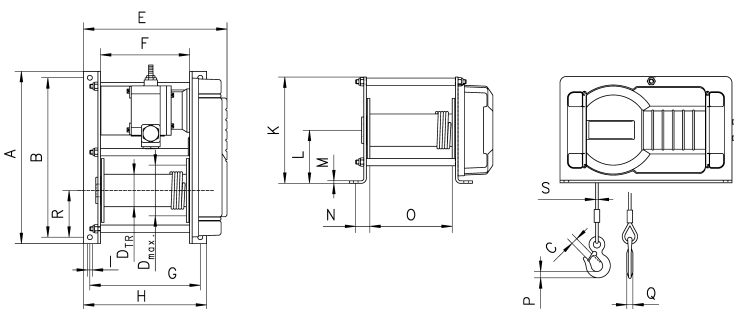
Grooved drum (recommended for single layer operation)

Model	Pulling force in top layer daN	Drum size	Rope length 1 st layer m	Max. rope length m
RPE 2-13 R	250	1	8.8	43
RPE 5-6 R	500	1	6.2	33
RPE 9-6/10-6 R	990/1000	1	8.2	30
RPE 2-13 LR	250	2	13.3	64
RPE 5-6 LR	500	2	9.5	49
RPE 5-12 LR	500	2	9.5	49
RPE 9-6/10-6 LR	990/1000	2	12.9	47
RPE 2-13 XLR	250	3	35.3	165
RPE 5-6 XLR	500	3	25.7	128
RPE 5-12 XLR	500	3	25.7	128
RPE 9-6/10-6 XLR	990/1000	3	25.2	89

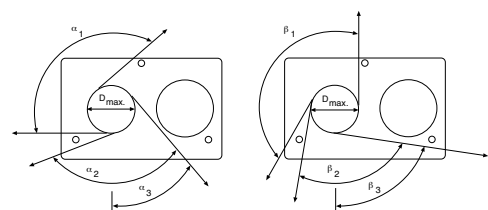
Dimensions model RPE

Model	RPE 2-13	RPE 5-6	RPE 5-12	RPE 9-6	RPE 10-6
A, mm	405	405	405	525	525
B, mm	375	375	375	485	485
C, mm	18	18	18	25	25
DTR, mm	76	76	76	108	108
Dmax, mm	104	118	118	148	148
DA, mm	150	150	150	180	180
E, mm	336	336	426	465	465
F, mm	210	210	300	270	270
G, mm	260	260	350	345	345
H, mm	290	290	380	380	380
I, mm	11	11	11	13	13
K, mm	250	250	250	340	340
L, mm	125	125	125	170	170
M, mm	6	6	6	10	10
N, mm	33	33	33	47.5	47.5
O, mm	194	194	284	250	250
P, mm	19	19	19	24	24
Q, mm	13	13	13	19	19
R, mm	125	125	125	170	170
S, mm	4	6	6	8	8
$\alpha 1, ^\circ$	130	130	130	145	145
$\alpha 2, ^\circ$	110	110	110	125	125
$\alpha 3, ^\circ$	40	40	40	50	50
$\beta 1, ^\circ$	150	150	150	155	155
$\beta 2, ^\circ$	90	90	90	100	100
$\beta 3, ^\circ$	80	80	80	83	83

Yale hoists and trolleys are not designed for passenger elevation applications and must not be used for this purpose.



Model RPE



Rope lead-offs for electric rope winch RPE



Pneumatic wire rope winch model RPA

Pulling force 250 - 500 daN

With 100% duty rating and an unlimited number of starts the model RPA is suitable for heavy duty applications. It is insusceptible to contamination, humidity and aggressive mediums from the outside.

Features

- Robust rotating piston motor with high starting torque, designed for operating pressures 4 to 6 bar.
- Spring pressure disc brake incorporated in the motor holds the load secure even in the event of an air failure.
- Sensitive control by means of direct acting valves in the control switch.

Option

- Different drum designs, e.g. extended to accommodate longer rope, machined grooves for exact reeling, with separation web and 2nd rope outlet for working with two ropes.
- Control including 2.5 m hose and air coupler.
- Maintenance unit for main air supply pipe (pressure regulator, manometer, lubricator and support).



Rope attachment



Different drum designs

To ensure faultless operation the compressed air supply must be filtered and oiled.

Hoisting equipment Pneumatic wire rope winches

Technical data model RPA

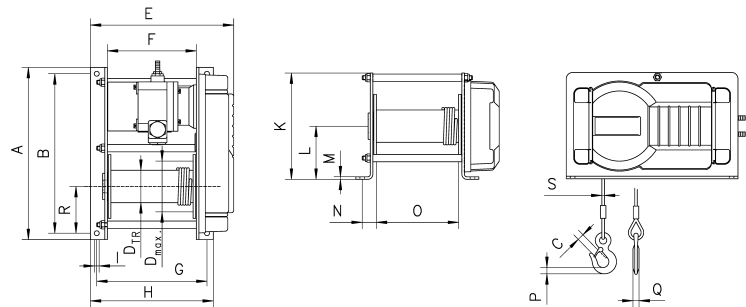
Model	EAN-No. 4025092*	Pulling force*	Lifting speed*	Lifting speed without load*	Lowering speed with rated load*	Rope diameter	Motor	Useable rope length in the top layer m	Weight without rope kg
		daN	m/min	m/min	m/min	mm	kW		
RPA 2-13	*072397	250	12.5	20	22	4	0.55	54.5	36.7
RPA 5-6	*072458	500	6.2	10	11	6	0.55	38.8	36.7

*Value in the top layer for 6 bar, air consumption 0.75 m³/min.

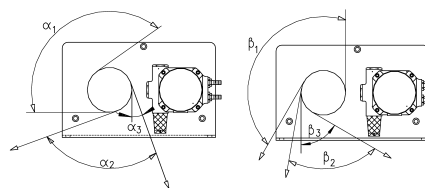
Available in corrosion proof version on request.

Dimensions model RPA

Model	RPA 2-13	RPA 5-6
A, mm	405	405
B, mm	375	375
C, mm	18	18
DTR, mm	76	76
Dmax, mm	104	118
DA, mm	150	150
E, mm	336	336
F, mm	210	210
G, mm	260	260
H, mm	290	290
I, mm	11	11
K, mm	250	250
L, mm	125	125
M, mm	6	6
N, mm	33	33
O, mm	194	194
P, mm	19	19
Q, mm	13	13
R, mm	125	125
S, mm	4	6
$\alpha 1, ^\circ$	130	130
$\alpha 2, ^\circ$	90	90
$\alpha 3, ^\circ$	20	20
$\beta 1, ^\circ$	150	150
$\beta 2, ^\circ$	70	70
$\beta 3, ^\circ$	60	60



Model RPA



Rope lead-offs for pneumatic rope winch RPA

Special designs on request!

When selecting the length of the rope please bear in mind that a minimum of 2.5 windings have to remain on the drum (approx. 1 m rope).



Manual wire rope winch with worm gear drive model MWS

Pulling force 125 - 2000 daN

For the operation there where is no electricity or an increase of dirt.

Recommended rope diameter according to DIN 3060 FE-znk 1770 sZ-spa. The rope is not part of the delivery package.

Features

- Enclosed gear drive for protection of internal parts, even under tough working conditions.
- Spur gears on roller bearings, rope drum on plain bearings.
- Compact design.
- Easy and quick mounting onto walls, poles, towers etc.
- They have a self-locking, anti-kickback and adjustable crank handle for fast lifting of smaller loads, resulting in lowest possible handle effort and rapid winding of the rope.
- Automatic load pressure brake for safe holding and extremely sensitive lowering of the load. Unintentional brake release is prevented even with swinging loads.
- They are suitable for operation in ambient temperatures of -20° through $+40^{\circ}$ C.

Option

- Corrosion resistant version.
- Grooved rope drum for improved guidance of the wire rope.
- Separation webs for operation with several wire ropes.

! Yale hoists and trolleys are not designed for passenger elevation applications and must not be used for this purpose.

Hoisting Equipment Manual wire rope winches

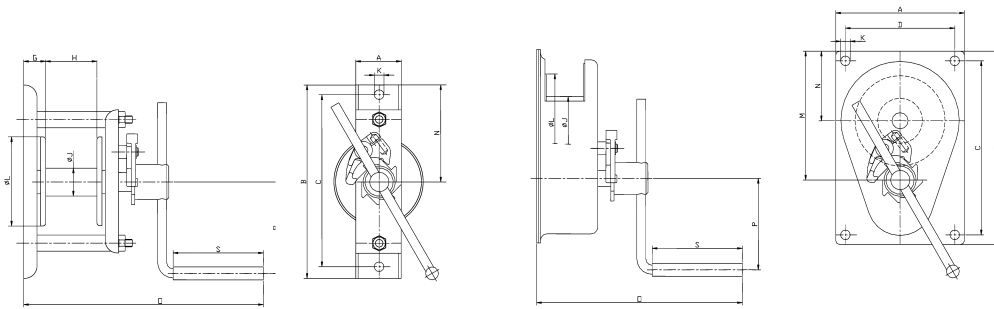
Technical data model MWS

Model	EAN-No. 4025092*	Pulling force 1 st layer daN	Pulling force top layer daN	Crank effort 1 st layer daN	Rope advance per one crank rotation 1 st layer mm	Ratio	Weight without rope kg	Recommended rope diameter* mm	Breaking load of wire rope min. kN	Useable rope length max. m	Number of layers max.
MWS 125	*080064	125	55	11	120	1:1	7	3	5.7	52	18
MWS 300	*080071	300	120	7	21	1:7.4	10	5	15.9	26	9
MWS 500	*080088	500	323	13	30	1:7.4	11	6	22.9	12	5
MWS 1000	*080095	1000	684	15	21	1:17	28	9	51	27	5
MWS 2000	*080101	2000	1712	24	16	1:25.7	32	13	106	7	2

*According to DIN 3060 FE-znk 1770sZ-spa

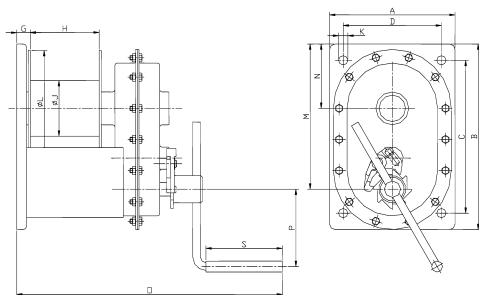
Dimensions model MWS

Model	MWS 125	MWS 300	MWS 500	MWS 1000	MWS 2000
A, mm	70	200	200	230	230
B, mm	305	300	300	340	340
C, mm	270	268	268	280	280
D, mm	168	168	168	180	180
G, mm	40	15	15	27	27
H, mm	85	60	60	126	126
ØJ, mm	32	50	70	102	121
K, mm	14	12	12	17	17
ØL, mm	141	140	140	212	212
M, mm	198	198	198	266	288
N, mm	153	108	108	118	118
O, mm	325	263	263	425	425
P, mm	300	250	250	250	250
S, mm	128	128	128	128	128



Model MWS, 125 daN

Model MWS, 300 - 500 daN



Model MWS, 1000 - 2000 daN



Manual wire rope winch with worm gear drive model MWW

Pulling force 250 - 5000 daN

Ideally suitable for applications where no electricity is available.

Recommended rope diameter according to DIN 3060 FE-znk 1770 sZ-spa. The rope is not part of the delivery package.

Features

- Housing and rope drums made out of robust steel plate.
- Worm shaft on roller bearings, rope drum on plain bearings.
- Small dimensions, compact design, large drum capacity.
- Easy and quick mounting onto walls, poles, towers etc.
- Two rope directions for operation from different positions.
- They have a self-locking, back stroke proof, adjustable crank handle for fast lifting of smaller loads, resulting in lowest possible handle effort and rapid winding of the rope.
- Two lifting speeds by means of different setting of the crank handle for capacities of 2000 kg and above.
- Automatic load pressure brake for safe holding and extremely sensitive lowering of the load.
- They are suitable for operation in ambient temperatures of -20° through +40° C.

Option

- Corrosion resistant version.
- Grooved rope drum for improved guidance of the wire rope.
- Separation webs for operation with several wire ropes.
- Free wheeling device for quick unwinding of the unloaded wire rope for capacities of 2000 kg and above.

! Yale hoists and trolleys are not designed for passenger elevation applications and must not be used for this purpose.

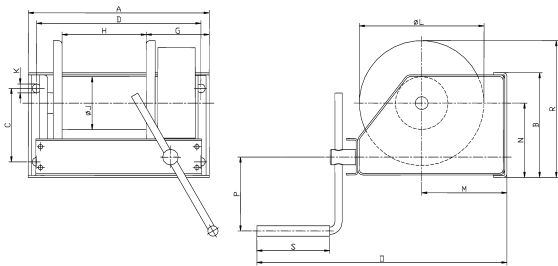
Technical data model MWW

Model	EAN-No. 4025092*	Pulling force 1 st layer daN	Pulling force top layer daN	Crank effort 1 st layer daN	Rope advance per one crank rotation 1 st layer 1 st /2 nd speed mm	Ratio	Weight without rope kg	Recommen- ded rope diameter* mm	Breaking load of wire rope min. kN	Useable rope length max. m	Number of layers max.
MWW 250	*079990	250	95	5	17/-	1:10	13	5	15.9	63	11
MWW 500	*080002	500	239	9	20/-	1:12	16	6	22.9	77	9
MWW 1000	*080019	1000	542	14	13/-	1:26	26	9	51	55	7
MWW 1500	*080026	1500	845	21	13/-	1:26	28	10	63	49	6
MWW 2000	*080033	2000	1129	12/20	5.5/11	1:76/38	60	13	106	46	6
MWW 3000	*080040	3000	1861	17/30	5/10	1:104/52	78	16	161	52	5
MWW 5000	*080057	5000	3165	34/61	6/12	1:120/60	115	20	252	40	5

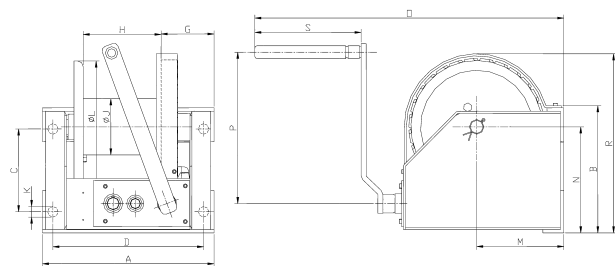
*According to DIN 3060 FE-znk 1770sZ-spa

Dimensions model MWW

Model	MWW 250	MWW 500	MWW 1000	MWW 1500	MWW 2000	MWW 3000	MWW 5000
A, mm	293	313	348	378	410	436	436
B, mm	140	164	201	238	295	356	421
C, mm	82	106	141	178	196	251	316
D, mm	261	281	316	346	360	386	386
G, mm	123	125	127	127	137	137	138
H, mm	107	129	160	185	180	205	200
ØJ, mm	48	70	102	102	133	165	219
K, mm	17	17	17	17	25	25	25
ØL, mm	160	190	240	240	312	376	437
M, mm	121	138	164	164	208	260	298
N, mm	88	96	140	142	249	308	335
O, mm	410	440	490	490	740	825	865
P, mm	350	350	350	350	380	380	380
R, mm	170	190	260	263	419	550	613
S, mm	140	140	140	140	250	250	250



Model MWW, 250 - 1500 daN



Model MWW, 2000 - 5000 daN



Manual wire rope winch with spur gear drive model HW-C

Pulling force 300 and 800 daN

Features

- Winch housing and rope drum from robust steel plate for high versatility.
- Rope drum on bush bearings for flawless rope lead-off.
- Spur gear drive for optimal efficiency.
- Compact design
- Easy and quick mounting onto walls, poles, towers etc.
- Pivotal handle
- Automatic load pressure brake for safe holding and extremely sensitive lowering of the load. Unintentional brake release is prevented even with swinging loads.
- The wire rope winch comes with yellow powder-coated finish as standard.
- Suitable for operation in ambient temperatures of -10° through +50°C.

Applications

Suitable for applications in areas where electricity is not available or where electric appliances cannot be safely operated on account of mud and dirt.

! Yale hoists and trolleys are not designed for passenger elevation applications and must not be used for this purpose.

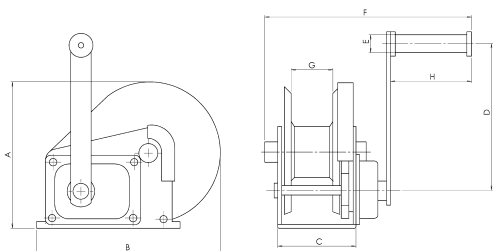
Technical data model HW-C

Model	EAN-No. 4025092*	Pulling force 1 st layer daN	Pulling force top layer daN	Crank effort 1 st layer daN	Rope advance per one crank rotation 1 st layer mm	Ratio	Weight without rope kg	Recomm- ended rope diametre* mm	Breaking load of wire rope min. kN	Useable rope length max. m	Number of layers max.
HW 30 C	*39161	300	120	22	40	4.2:1	3.8	5	13.6	20	9
HW 80 C	*39192	800	400	20	26	10:1	10.1	8	34.8	15	7

*According to DIN 3060 FE-znk 1770sZ-spa

Dimensions model HW-C

Model	HW 30 C	HW 80 C
A	156	216
B	184	293
C	88	127
D	208	319
E	27	27
F	273	308
G	51	63
H	109	109



Model HW-C

Manual wire rope winch stainless steel version with spur gear drive model HW-CS

Pulling force 300 and 800 daN

Features

- Winch housing and rope drum from stainless steel; the drum plain bearings are made of bronze for additional corrosion resistance.
- Rope drum on bush bearings for flawless rope lead-off.
- Spur gear drive for optimal efficiency.
- Compact design
- Easy and quick mounting onto walls, poles, towers etc.
- Pivotal handle
- Automatic load pressure brake for safe holding and extremely sensitive lowering of the load. Unintentional brake release is prevented even with swinging loads.
- Suitable for operation in ambient temperatures of -10° through +50°C.

Applications

These winches are suitable for outdoor applications and in areas where electricity is not available.

Option

Stainless steel wire rope



! Yale hoists and trolleys are not designed for passenger elevation applications and must not be used for this purpose.

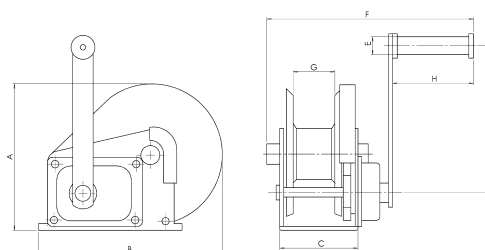
Technical data model HW-CS

Model	EAN-No. 4025092*	Pulling force 1 st layer daN	Pulling force top layer daN	Crank effort 1 st layer daN	Rope advance per one crank rotation 1 st layer mm	Ratio	Weight without rope kg	Recomm- ended rope diameter* mm	Breaking load of wire rope min. kN	Useable rope length max. m	Number of layers max.
HW 30 CS	*39239	300	120	22	40	4.2:1	3.8	5	13.6	20	9
HW 80 CS	*39253	800	400	20	26	10:1	10.1	8	34.8	15	7

*According to DIN 3060 FE-znk 1770sZ-spa

Dimensions model HW-CS

Model	HW 30 CS	HW 80 CS
A	156	216
B	184	293
C	88	127
D	208	319
E	27	27
F	273	308
G	51	63
H	109	109



Model HW-CS



Ratchet jack model Yaletaurus

Capacity 10000 kg

The Yaletaurus is the ideal unit for lifting, positioning or transportation of machines resp. heavy objects as well as for repair and assembly jobs in cramped areas and under toughest conditions.

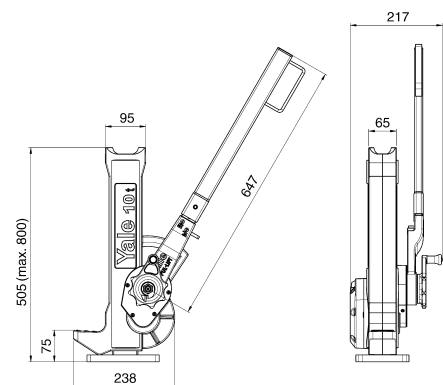
In spite of its capacity of 10000 kg the Yaletaurus has a weight of just 30 kg and the integrated carrying handle makes it a portable, versatile tool. With a hand force of 45 kg on the detachable hand lever, the Yaletaurus will lift, press, push or lower a load of 10000 kg in any direction. A standard crank wheel will bring the jack quickly to the required position.

Features

- Automatic screw-and-disc type load brake.
The axial brake pressure is generated by the load itself and is, therefore, proportional to the size of the load. The load is held secure in any position.
- Single part housing made from spheroidal cast iron with integrated lifting claw.
- The screw-and-disc type load brake originates from the Yale Pul-lift (spare parts are easily available).
- The self-locking, anti-kickback operating lever reduces the risk of injuries.
- Low lever pull and long life endurance due to optimum gearing and high quality materials.

Technical data model Yaletaurus

Model	EAN-No. 4025092*	Capacity on the head kg	Capacity on the claw kg	Max. lifting height mm	Effort at WLL kg	Net weight kg
Taurus	*066044	10000	7000	800	45	31.1



Model Taurus

Steel jack acc. to DIN 7355 model SJ

Capacity 1500 - 10000 kg

Mechanical steel jacks can basically be used to lift almost all kinds of loads in maintenance and repair, ship building, construction as well as agriculture.

The load can be positioned either on the head or the claw. By turning the operating lever the jack moves smoothly and conveniently up and down along the rack.

Features

- The load is held securely in any position. Inside the load brake the axial brake pressure is generated by the load itself, thus, it is proportional to the size of the load.
- The self-locking, anti-kickback operating lever reduces the risk of injuries. The handle can be tilted for use in confined spaces.
- The precisely machined gear box with optimal gear ration, ensures a minimum of effort and smooth operation.



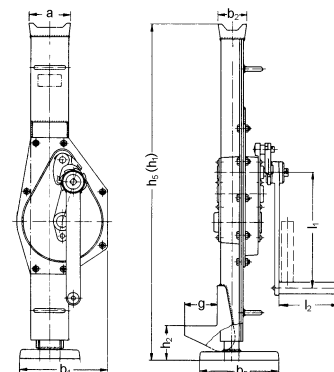
Rail jack model RSJ
High stability on uneven ground is ensured by the extra large floor plate

Technical data model SJ

Model	EAN-No. 4025092*	Capacity kg	Max. lifting height mm	Effort at WLL kg	Net weight kg
SJ 15	*080897	1500	1085	28	17
SJ 30	*079877	3000	1095	28	20
SJ 50	*079884	5000	1080	28	27
SJ 100	*080903	10000	1210	56	43

Dimensions model SJ

Model	SJ 15	SJ 30	SJ 50	SJ 100
a, mm	76	83	108	124
b1, mm	164	200	190	252
b2, mm	38	38	52	65
b5, mm	140	140	170	170
g, mm	55	65	71	86
h1, mm	360	360	350	410
h2, mm	70	70	80	85
h5, mm	725	735	730	800
l1, mm	225	249	275	300
l2, mm	113	128	128	250



Model SJ